



[Go to Product page](#)

Datasheet for ABIN6266094
anti-ZDHHC18 antibody (N-Term)

2 Images

Overview

Quantity:	100 µL
Target:	ZDHHC18
Binding Specificity:	N-Term
Reactivity:	Mouse, Human, Rat
Host:	Rabbit
Clonality:	Polyclonal
Conjugate:	This ZDHHC18 antibody is un-conjugated
Application:	Western Blotting (WB), ELISA

Product Details

Immunogen:	A synthesized peptide derived from human ZDHHC18, corresponding to a region within N-terminal amino acids.
Isotype:	IgG
Specificity:	ZDHHC18 Antibody detects endogenous levels of total ZDHHC18.
Predicted Reactivity:	Pig,Bovine
Purification:	The antiserum was purified by peptide affinity chromatography using SulfoLink™ Coupling Resin (Thermo Fisher Scientific).

Target Details

Target:	ZDHHC18
---------	---------

Target Details

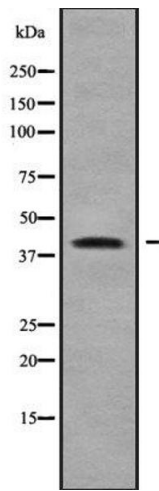
Alternative Name:	ZDHHC18 (ZDHHC18 Products)
Background:	Description: Has palmitoyltransferase activity towards HRAS and LCK. Gene: ZDHHC18
Molecular Weight:	42 kDa
Gene ID:	84243
UniProt:	Q9NUE0

Application Details

Application Notes:	WB 1:1000-3000, ELISA(peptide) 1:20000-1:40000
Restrictions:	For Research Use only

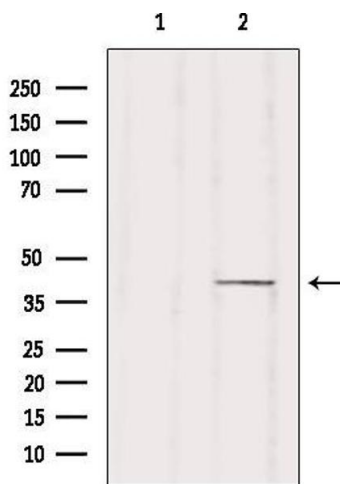
Handling

Format:	Liquid
Concentration:	1 mg/mL
Buffer:	Rabbit IgG in phosphate buffered saline , pH 7.4, 150 mM NaCl, 0.02 % sodium azide and 50 % glycerol.
Preservative:	Sodium azide
Precaution of Use:	This product contains Sodium azide: a POISONOUS AND HAZARDOUS SUBSTANCE which should be handled by trained staff only.
Storage:	-20 °C
Storage Comment:	Store at -20 °C. Stable for 12 months from date of receipt.
Expiry Date:	12 months



Western Blotting

Image 1. Western blot analysis of ZDHHC18 using LOVO whole cell lysates



Western Blotting

Image 2. Western blot analysis of extracts from HUVEC, using ZDHHC18 Antibody. Lane 1 was treated with the blocking peptide.