

Datasheet for ABIN6266096

**anti-ZEB1 antibody (Internal Region)**

3 Images

3 Publications

[Go to Product page](#)

## Overview

Quantity:	100 µL
Target:	ZEB1
Binding Specificity:	Internal Region
Reactivity:	Human, Mouse, Rat
Host:	Rabbit
Clonality:	Polyclonal
Conjugate:	This ZEB1 antibody is un-conjugated
Application:	Western Blotting (WB), ELISA, Immunohistochemistry (IHC), Immunofluorescence (IF), Immunocytochemistry (ICC), Immunohistochemistry (Frozen Sections) (IHC (fro))

## Product Details

Immunogen:	A synthesized peptide derived from human ZEB1, corresponding to a region within the internal amino acids.
Isotype:	IgG
Specificity:	ZEB1 Antibody detects endogenous levels of total ZEB1.
Predicted Reactivity:	Pig,Bovine,Sheep,Rabbit,Dog,Chicken,Xenopus
Purification:	The antiserum was purified by peptide affinity chromatography using SulfoLink™ Coupling Resin (Thermo Fisher Scientific).

## Target Details

Target:	ZEB1
---------	------

## Target Details

Alternative Name:	ZEB1 ( <a href="#">ZEB1 Products</a> )
Background:	<p>Description: Acts as a transcriptional repressor. Inhibits interleukin-2 (IL-2) gene expression. Enhances or represses the promoter activity of the ATP1A1 gene depending on the quantity of cDNA and on the cell type. Represses E-cadherin promoter and induces an epithelial-mesenchymal transition (EMT) by recruiting SMARCA4/BRG1. Represses BCL6 transcription in the presence of the corepressor CTBP1. Positively regulates neuronal differentiation. Represses RCOR1 transcription activation during neurogenesis. Represses transcription by binding to the E box (5'-CANNTG-3'). Promotes tumorigenicity by repressing stemness-inhibiting microRNAs.</p> <p>Gene: ZEB1</p>
Molecular Weight:	124kDa
Gene ID:	6935
UniProt:	<a href="#">P37275</a>
Pathways:	<a href="#">Regulation of Muscle Cell Differentiation</a>

## Application Details

Application Notes:	WB 1:500-1:2000, IHC 1:50-1:200, IF/ICC 1:100, ELISA(peptide) 1:20000-1:40000
Restrictions:	For Research Use only

## Handling

Format:	Liquid
Concentration:	1 mg/mL
Buffer:	Rabbit IgG in phosphate buffered saline , pH 7.4, 150 mM NaCl, 0.02 % sodium azide and 50 % glycerol.
Preservative:	Sodium azide
Precaution of Use:	This product contains Sodium azide: a POISONOUS AND HAZARDOUS SUBSTANCE which should be handled by trained staff only.
Storage:	-20 °C
Storage Comment:	Store at -20 °C. Stable for 12 months from date of receipt.
Expiry Date:	12 months

## Publications

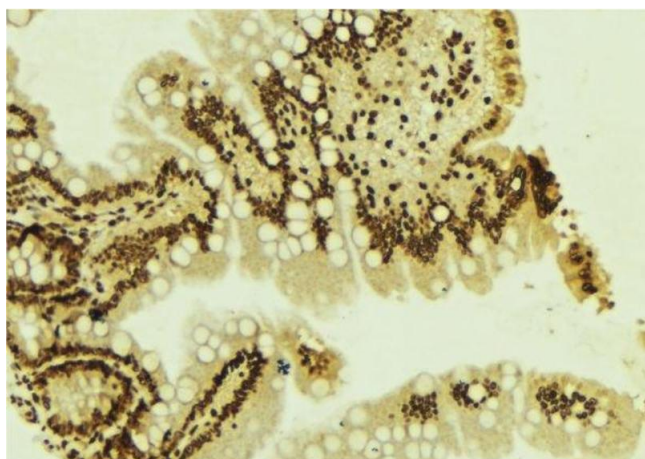
### Product cited in:

Shao, Zhang, Ma, Lu, Meng, Li, Wang, Chen, Zhang, Han, Liu, Ma: "MicroRNA-139-5p affects cisplatin sensitivity in human nasopharyngeal carcinoma cells by regulating the epithelial-to-mesenchymal transition." in: **Gene**, Vol. 652, pp. 48-58, (2018) ([PubMed](#)).

Li, Shen, Wang, Li, Wang, Jiang, Zhou, Feng: "EGCG regulates the cross-talk between JWA and topoisomerase IIa in non-small-cell lung cancer (NSCLC) cells." in: **Scientific reports**, Vol. 5, pp. 11009, (2016) ([PubMed](#)).

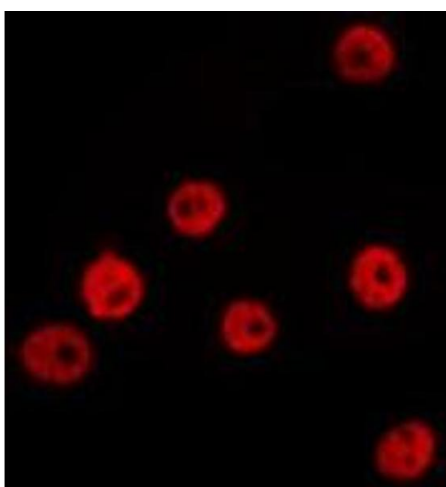
Li, Zhang, Sun, Sun, Shi, Liu, Liu: "MicroRNA-181a regulates epithelial-mesenchymal transition by targeting PTEN in drug-resistant lung adenocarcinoma cells." in: **International journal of oncology**, Vol. 47, Issue 4, pp. 1379-92, (2016) ([PubMed](#)).

## Images



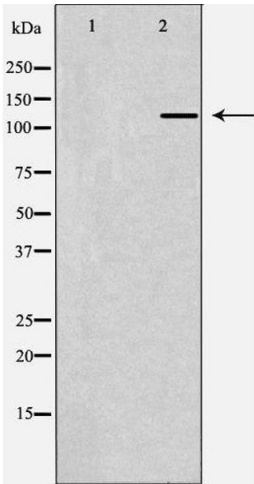
### Immunohistochemistry

**Image 1.** ABIN6277656 at 1/100 staining Mouse colon tissue by IHC-P. The sample was formaldehyde fixed and a heat mediated antigen retrieval step in citrate buffer was performed. The sample was then blocked and incubated with the antibody for 1.5 hours at 22°C. An HRP conjugated goat anti-rabbit antibody was used as the secondary



### Immunofluorescence (fixed cells)

**Image 2.** ABIN6277656 staining Hela by IF/ICC. The sample were fixed with PFA and permeabilized in 0.1% Triton X-100, then blocked in 10% serum for 45 minutes at 25°C. The primary antibody was diluted at 1/200 and incubated with the sample for 1 hour at 37°C. An Alexa Fluor 594 conjugated goat anti-rabbit IgG (H+L) Ab, diluted at 1/600, was used as the secondary antibody



Western Blotting

**Image 3.** Western blot analysis of Hela whole cell lysates, using ZEB1 Antibody. The lane on the left is treated with the antigen-specific peptide.