

Datasheet for ABIN6266110
anti-ZNF148 antibody (N-Term)[Go to Product page](#)

4 Images

Overview

Quantity:	100 µL
Target:	ZNF148
Binding Specificity:	N-Term
Reactivity:	Human, Mouse, Rat
Host:	Rabbit
Clonality:	Polyclonal
Conjugate:	This ZNF148 antibody is un-conjugated
Application:	Western Blotting (WB), Immunohistochemistry (IHC), ELISA, Immunofluorescence (IF), Immunocytochemistry (ICC)

Product Details

Immunogen:	A synthesized peptide derived from human ZNF148, corresponding to a region within N-terminal amino acids.
Isotype:	IgG
Specificity:	ZNF148 Antibody detects endogenous levels of total ZNF148.
Predicted Reactivity:	Zebrafish,Bovine,Horse,Sheep,Dog,Xenopus
Purification:	The antiserum was purified by peptide affinity chromatography using SulfoLink™ Coupling Resin (Thermo Fisher Scientific).

Target Details

Target:	ZNF148
---------	--------

Target Details

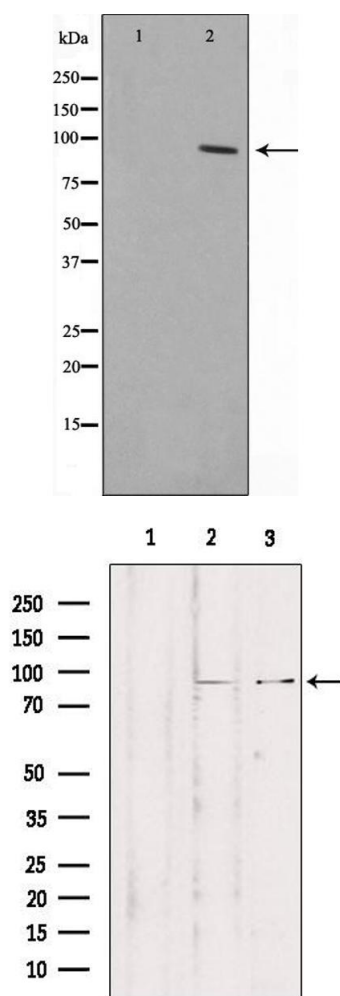
Alternative Name:	ZNF148 (ZNF148 Products)
Background:	<p>Description: Involved in transcriptional regulation. Represses the transcription of a number of genes including gastrin, stromelysin and enolase. Binds to the G-rich box in the enhancer region of these genes.</p> <p>Gene: ZNF148</p>
Molecular Weight:	89kDa
Gene ID:	7707
UniProt:	Q9UQR1

Application Details

Application Notes:	WB 1:500-1:2000, IHC 1:50-1:200, IF/ICC 1:100-1:500, ELISA(peptide) 1:20000-1:40000
Restrictions:	For Research Use only

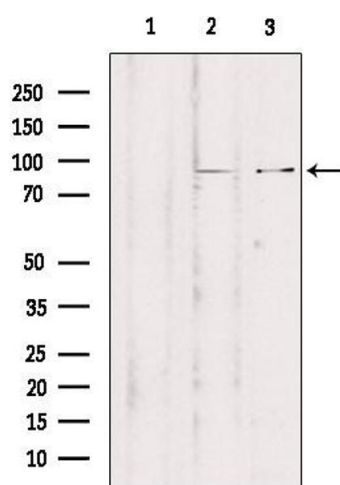
Handling

Format:	Liquid
Concentration:	1 mg/mL
Buffer:	Rabbit IgG in phosphate buffered saline , pH 7.4, 150 mM NaCl, 0.02 % sodium azide and 50 % glycerol.
Preservative:	Sodium azide
Precaution of Use:	This product contains Sodium azide: a POISONOUS AND HAZARDOUS SUBSTANCE which should be handled by trained staff only.
Storage:	-20 °C
Storage Comment:	Store at -20 °C. Stable for 12 months from date of receipt.
Expiry Date:	12 months



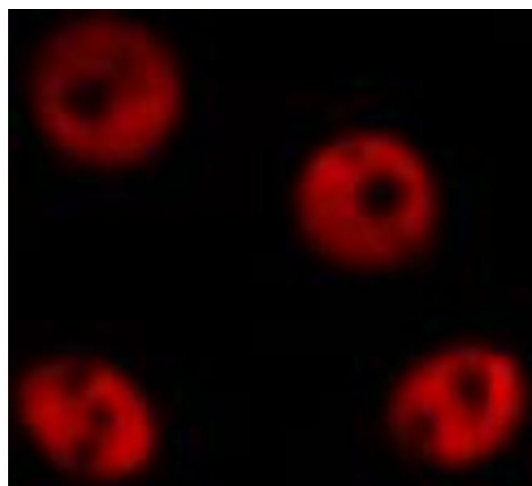
Western Blotting

Image 1. Western blot analysis on HepG2 cell lysate using ZNF148 Antibody, *The lane on the left is treated with the antigen-specific peptide.*



Western Blotting

Image 2. Western blot analysis of extracts from various samples, using ZNF148 Antibody. Lane 1: rat brain treated with blocking peptide. Lane 2: rat brain; Lane 3: mouse brain;



Immunofluorescence (fixed cells)

Image 3. ABIN6267010 staining HepG2 by IF/ICC. The sample were fixed with PFA and permeabilized in 0.1% Triton X-100, then blocked in 10% serum for 45 minutes at 25°C. The primary antibody was diluted at 1/200 and incubated with the sample for 1 hour at 37°C. An Alexa Fluor 594 conjugated goat anti-rabbit IgG (H+L) Ab, diluted at 1/600, was used as the secondary antibody.

Please check the [product details page](#) for more images. Overall 4 images are available for ABIN6266110.