



[Go to Product page](#)

Datasheet for ABIN6266111

## anti-ZNF174 antibody (Internal Region)

### 4 Images

#### Overview

Quantity:	100 µL
Target:	ZNF174
Binding Specificity:	Internal Region
Reactivity:	Human, Rat
Host:	Rabbit
Clonality:	Polyclonal
Conjugate:	This ZNF174 antibody is un-conjugated
Application:	Western Blotting (WB), ELISA, Immunofluorescence (IF), Immunocytochemistry (ICC)

#### Product Details

Immunogen:	A synthesized peptide derived from human ZNF174, corresponding to a region within the internal amino acids.
Isotype:	IgG
Specificity:	ZNF174 Antibody detects endogenous levels of total ZNF174.
Predicted Reactivity:	Pig,Bovine,Sheep,Rabbit,Dog
Purification:	The antiserum was purified by peptide affinity chromatography using SulfoLink™ Coupling Resin (Thermo Fisher Scientific).

#### Target Details

Target:	ZNF174
---------	--------

## Target Details

---

Alternative Name:	ZNF174 ( <a href="#">ZNF174 Products</a> )
Background:	Description: Transcriptional repressor. Gene: ZNF174
Molecular Weight:	46kDa
Gene ID:	7727
UniProt:	<a href="#">Q15697</a>

## Application Details

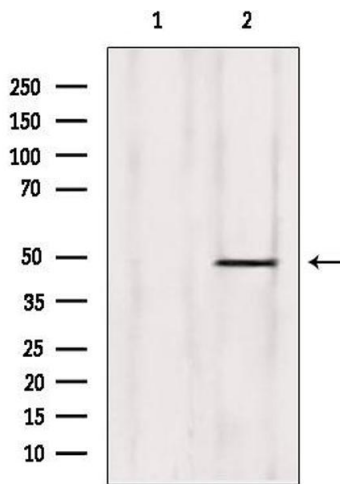
---

Application Notes:	WB 1:500-1:2000, IF/ICC 1:100-1:500, ELISA(peptide) 1:20000-1:40000
Restrictions:	For Research Use only

## Handling

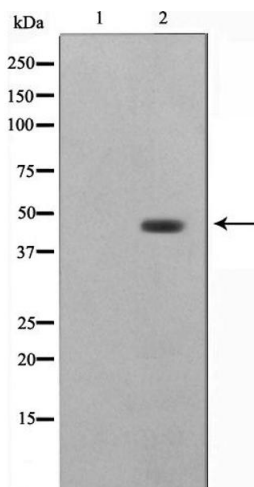
---

Format:	Liquid
Concentration:	1 mg/mL
Buffer:	Rabbit IgG in phosphate buffered saline , pH 7.4, 150 mM NaCl, 0.02 % sodium azide and 50 % glycerol.
Preservative:	Sodium azide
Precaution of Use:	This product contains Sodium azide: a POISONOUS AND HAZARDOUS SUBSTANCE which should be handled by trained staff only.
Storage:	-20 °C
Storage Comment:	Store at -20 °C. Stable for 12 months from date of receipt.
Expiry Date:	12 months



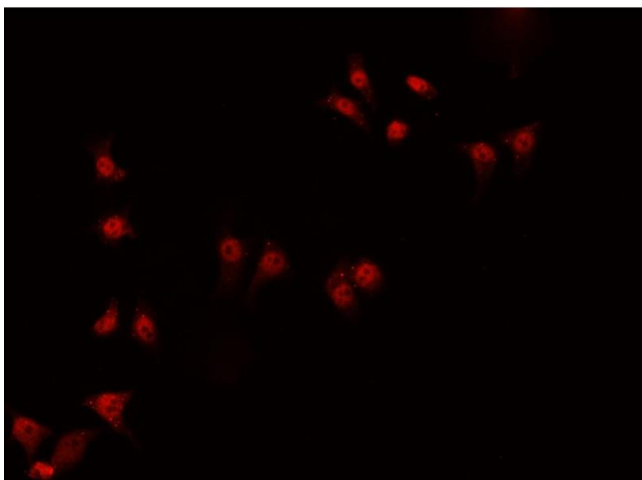
#### Western Blotting

**Image 1.** Western blot analysis of extracts from rat heart, using ZNF174 Antibody. Lane 1 was treated with the blocking peptide.



#### Western Blotting

**Image 2.** Western blot analysis on HeLa cell lysate using ZNF174 Antibody, The lane on the left is treated with the antigen-specific peptide.



#### Immunofluorescence (fixed cells)

**Image 3.** ABIN6266919 staining HeLa cells by IF/ICC. The sample were fixed with PFA and permeabilized in 0.1% Triton X-100, then blocked in 10% serum for 45 minutes at 25°C. The primary antibody was diluted at 1/200 and incubated with the sample for 1 hour at 37°C. An Alexa Fluor 594 conjugated goat anti-rabbit IgG (H+L) antibody (Cat.# S0006), diluted at 1/600, was used as secondary antibody

Please check the [product details page](#) for more images. Overall 4 images are available for ABIN6266111.