



[Go to Product page](#)

Datasheet for ABIN6266116

## anti-ZNF23 antibody

### 2 Images

#### Overview

Quantity:	100 µL
Target:	ZNF23
Reactivity:	Human
Host:	Rabbit
Clonality:	Polyclonal
Conjugate:	This ZNF23 antibody is un-conjugated
Application:	ELISA, Western Blotting (WB), Immunofluorescence (IF), Immunocytochemistry (ICC)

#### Product Details

Immunogen:	A synthesized peptide derived from human ZNF23
Isotype:	IgG
Specificity:	ZNF23 Antibody detects endogenous levels of total ZNF23
Cross-Reactivity:	Human
Purification:	The antiserum was purified by peptide affinity chromatography using SulfoLink™ Coupling Resin (Thermo Fisher Scientific).

#### Target Details

Target:	ZNF23
Alternative Name:	ZNF23 ( <a href="#">ZNF23 Products</a> )
Background:	Description: May be involved in transcriptional regulation. May have a role in embryonic

## Target Details

---

development.

Gene: ZNF23

---

Molecular Weight: 73 kDa

---

Gene ID: 7571

---

UniProt: [P17027](#)

---

## Application Details

---

Application Notes: WB 1:1000-3000, IF/ICC 1:100-1:500

---

Restrictions: For Research Use only

---

## Handling

---

Format: Liquid

---

Concentration: 1 mg/mL

---

Buffer: Rabbit IgG in phosphate buffered saline , pH 7.4, 150 mM NaCl, 0.02 % sodium azide and 50 % glycerol.

---

Preservative: Sodium azide

---

Precaution of Use: This product contains Sodium azide: a POISONOUS AND HAZARDOUS SUBSTANCE which should be handled by trained staff only.

---

Storage: -20 °C

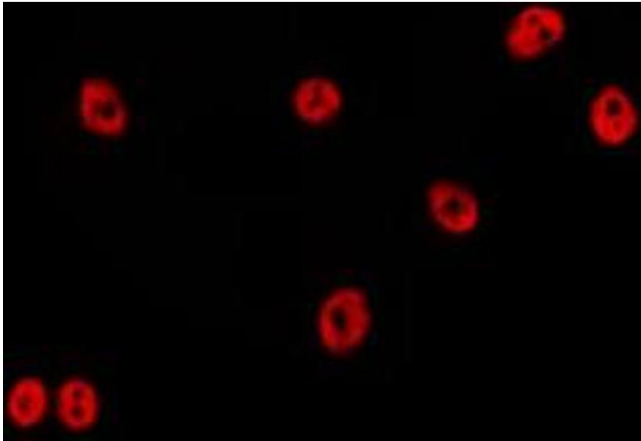
---

Storage Comment: Store at -20 °C.Stable for 12 months from date of receipt

---

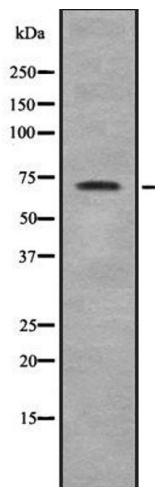
Expiry Date: 12 months

---



### Immunofluorescence (fixed cells)

**Image 1.** ABIN6278648 staining HepG2 by IF/ICC. The sample were fixed with PFA and permeabilized in 0.1% Triton X-100, then blocked in 10% serum for 45 minutes at 25°C. The primary antibody was diluted at 1/200 and incubated with the sample for 1 hour at 37°C. An Alexa Fluor 594 conjugated goat anti-rabbit IgG (H+L) Ab, diluted at 1/600, was used as the secondary antibody



### Western Blotting

**Image 2.** Western blot analysis of ZNF23 using COS7 whole cell lysates