

Datasheet for ABIN6266124
anti-ZNF295 antibody (N-Term)[Go to Product page](#)

3 Images

Overview

Quantity:	100 µL
Target:	ZNF295
Binding Specificity:	N-Term
Reactivity:	Human, Mouse
Host:	Rabbit
Clonality:	Polyclonal
Conjugate:	This ZNF295 antibody is un-conjugated
Application:	Immunohistochemistry (IHC), Western Blotting (WB), ELISA

Product Details

Immunogen:	A synthesized peptide derived from human ZNF295, corresponding to a region within N-terminal amino acids.
Isotype:	IgG
Specificity:	ZNF295 Antibody detects endogenous levels of total ZNF295.
Predicted Reactivity:	Pig,Bovine,Horse,Rabbit,Chicken
Purification:	The antiserum was purified by peptide affinity chromatography using SulfoLink™ Coupling Resin (Thermo Fisher Scientific).

Target Details

Target:	ZNF295
---------	--------

Target Details

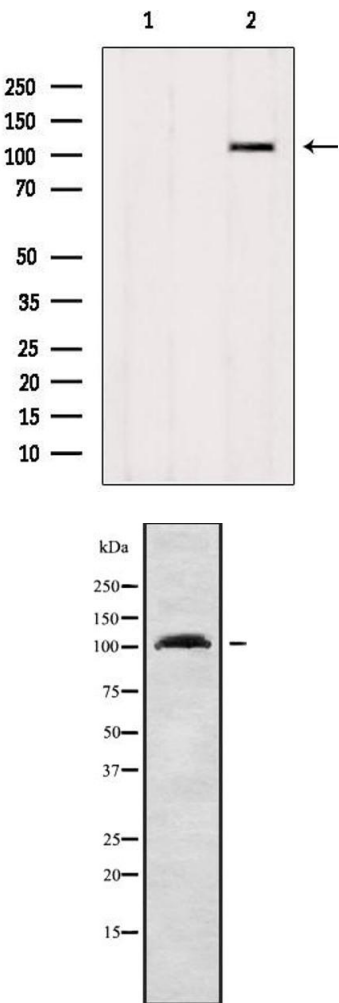
Alternative Name:	ZBTB21 (ZNF295 Products)
Background:	Description: Acts as a transcription repressor. Gene: ZBTB21
Molecular Weight:	119 kDa
Gene ID:	49854
UniProt:	Q9ULJ3

Application Details

Application Notes:	WB 1:1000-3000, IHC 1:200, ELISA(peptide) 1:20000-1:40000
Restrictions:	For Research Use only

Handling

Format:	Liquid
Concentration:	1 mg/mL
Buffer:	Rabbit IgG in phosphate buffered saline , pH 7.4, 150 mM NaCl, 0.02 % sodium azide and 50 % glycerol.
Preservative:	Sodium azide
Precaution of Use:	This product contains Sodium azide: a POISONOUS AND HAZARDOUS SUBSTANCE which should be handled by trained staff only.
Storage:	-20 °C
Storage Comment:	Store at -20 °C. Stable for 12 months from date of receipt.
Expiry Date:	12 months

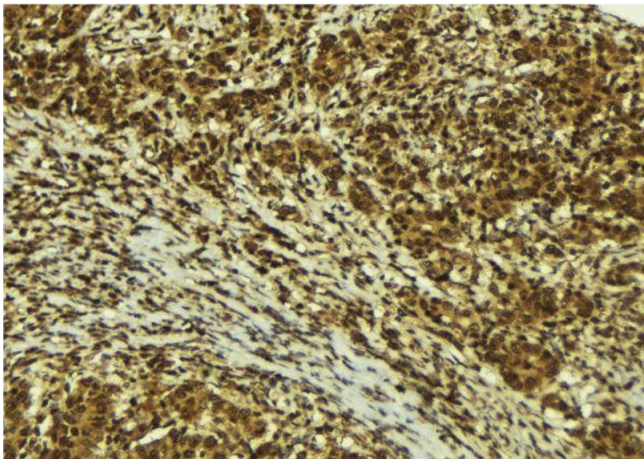


Western Blotting

Image 1. Western blot analysis of extracts from HepG2, using ZNF295 Antibody. Lane 1 was treated with the blocking peptide.

Western Blotting

Image 2. Western blot analysis of ZNF295 using 293 whole cell lysates



Immunohistochemistry

Image 3. ABIN6272493 at 1/100 staining Human breast cancer tissue by IHC-P. The sample was formaldehyde fixed and a heat mediated antigen retrieval step in citrate buffer was performed. The sample was then blocked and incubated with the antibody for 1.5 hours at 22°C. An HRP conjugated goat anti-rabbit antibody was used as the secondary.