



[Go to Product page](#)

Datasheet for ABIN6266133  
**anti-ZNF600 antibody**

1 Image

### Overview

Quantity:	100 µL
Target:	ZNF600
Reactivity:	Human
Host:	Rabbit
Clonality:	Polyclonal
Conjugate:	This ZNF600 antibody is un-conjugated
Application:	ELISA, Western Blotting (WB)

### Product Details

Immunogen:	A synthesized peptide derived from human ZNF600
Isotype:	IgG
Specificity:	ZNF600 Antibody detects endogenous levels of total ZNF600
Cross-Reactivity:	Human
Purification:	The antiserum was purified by peptide affinity chromatography using SulfoLink™ Coupling Resin (Thermo Fisher Scientific).

### Target Details

Target:	ZNF600
Alternative Name:	ZNF600 ( <a href="#">ZNF600 Products</a> )
Background:	Description: May be involved in transcriptional regulation.

## Target Details

---

Gene: ZNF600

Molecular Weight: 83 kDa

Gene ID: 162966

UniProt: [Q6ZNG1](#)

## Application Details

---

Application Notes: WB 1:1000-3000

Restrictions: For Research Use only

## Handling

---

Format: Liquid

Concentration: 1 mg/mL

Buffer: Rabbit IgG in phosphate buffered saline , pH 7.4, 150 mM NaCl, 0.02 % sodium azide and 50 % glycerol.

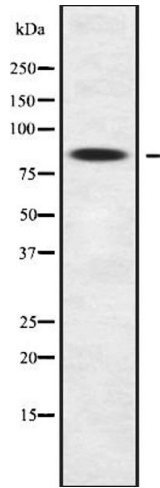
Preservative: Sodium azide

Precaution of Use: This product contains Sodium azide: a POISONOUS AND HAZARDOUS SUBSTANCE which should be handled by trained staff only.

Storage: -20 °C

Storage Comment: Store at -20 °C.Stable for 12 months from date of receipt

Expiry Date: 12 months



### Western Blotting

**Image 1.** Western blot analysis of ZNF600 using K562 whole cell lysates