

Datasheet for ABIN6266154

anti-ABCA6 antibody[Go to Product page](#)**1** Image

Overview

Quantity:	100 µL
Target:	ABCA6
Reactivity:	Human, Mouse, Rat
Host:	Rabbit
Clonality:	Polyclonal
Conjugate:	This ABCA6 antibody is un-conjugated
Application:	Western Blotting (WB), ELISA, Immunohistochemistry (IHC)

Product Details

Immunogen:	A synthesized peptide derived from mouse ABCA6
Isotype:	IgG
Specificity:	Abca6 Antibody detects endogenous levels of total Abca6
Cross-Reactivity:	Human, Mouse (Murine), Rat (Rattus)
Purification:	The antiserum was purified by peptide affinity chromatography using SulfoLink™ Coupling Resin (Thermo Fisher Scientific).

Target Details

Target:	ABCA6
Alternative Name:	Abca6 (ABCA6 Products)
Molecular Weight:	183kDa

Target Details

UniProt: [Q8K441](#)

Application Details

Application Notes: WB 1:500-1:2000 IHC 1:50-1:200

Restrictions: For Research Use only

Handling

Format: Liquid

Concentration: 1 mg/mL

Buffer: Rabbit IgG in phosphate buffered saline , pH 7.4, 150 mM NaCl, 0.02 % sodium azide and 50 % glycerol.

Preservative: Sodium azide

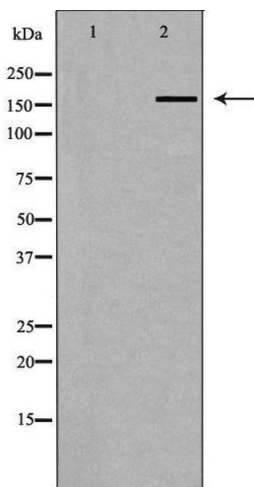
Precaution of Use: This product contains Sodium azide: a POISONOUS AND HAZARDOUS SUBSTANCE which should be handled by trained staff only.

Storage: -20 °C

Storage Comment: Store at -20 °C.Stable for 12 months from date of receipt

Expiry Date: 12 months

Images



Western Blotting

Image 1. Western blot analysis of extracts of 293T , using ABCA6 antibody. The lane on the left is treated with the antigen-specific peptide.