

Datasheet for ABIN6266156

anti-Rab12 antibody**1** Image[Go to Product page](#)

Overview

Quantity:	100 µL
Target:	Rab12 (RABL2)
Reactivity:	Human, Mouse, Rat
Host:	Rabbit
Clonality:	Polyclonal
Conjugate:	This Rab12 antibody is un-conjugated
Application:	Western Blotting (WB), Immunohistochemistry (IHC), ELISA

Product Details

Immunogen:	A synthesized peptide derived from mouse Rab12
Isotype:	IgG
Specificity:	Rab12 Antibody detects endogenous levels of total Rab12
Cross-Reactivity:	Human, Mouse (Murine), Rat (Rattus)
Purification:	The antiserum was purified by peptide affinity chromatography using SulfoLink™ Coupling Resin (Thermo Fisher Scientific).

Target Details

Target:	Rab12 (RABL2)
Alternative Name:	Rab12 (RABL2 Products)
Molecular Weight:	26kDa

Target Details

UniProt: [E9Q9D5](#)

Application Details

Application Notes: WB 1:500-1:2000 IHC 1:50-1:200

Restrictions: For Research Use only

Handling

Format: Liquid

Concentration: 1 mg/mL

Buffer: Rabbit IgG in phosphate buffered saline , pH 7.4, 150 mM NaCl, 0.02 % sodium azide and 50 % glycerol.

Preservative: Sodium azide

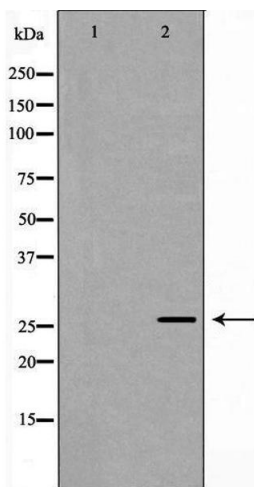
Precaution of Use: This product contains Sodium azide: a POISONOUS AND HAZARDOUS SUBSTANCE which should be handled by trained staff only.

Storage: -20 °C

Storage Comment: Store at -20 °C.Stable for 12 months from date of receipt

Expiry Date: 12 months

Images



Western Blotting

Image 1. Western blot analysis of recombinant protein using Rabl2 antibody. The lane on the left is treated with the antigen-specific peptide.