



[Go to Product page](#)

Datasheet for ABIN6266202

anti-Dopamine Receptor d1 antibody (N-Term)

3 Images

Overview

Quantity:	100 µL
Target:	Dopamine Receptor d1 (DRD1)
Binding Specificity:	N-Term
Reactivity:	Human, Rat, Mouse
Host:	Rabbit
Clonality:	Polyclonal
Conjugate:	This Dopamine Receptor d1 antibody is un-conjugated
Application:	Western Blotting (WB), ELISA, Immunohistochemistry (IHC), Immunofluorescence (IF), Immunocytochemistry (ICC)

Product Details

Immunogen:	A synthesized peptide derived from human DRD1, corresponding to a region within N-terminal amino acids.
Isotype:	IgG
Specificity:	DRD1 Antibody detects endogenous levels of total DRD1.
Predicted Reactivity:	Pig,Bovine,Sheep,Dog
Purification:	The antiserum was purified by peptide affinity chromatography using SulfoLink™ Coupling Resin (Thermo Fisher Scientific).

Target Details

Target:	Dopamine Receptor d1 (DRD1)
---------	-----------------------------

Target Details

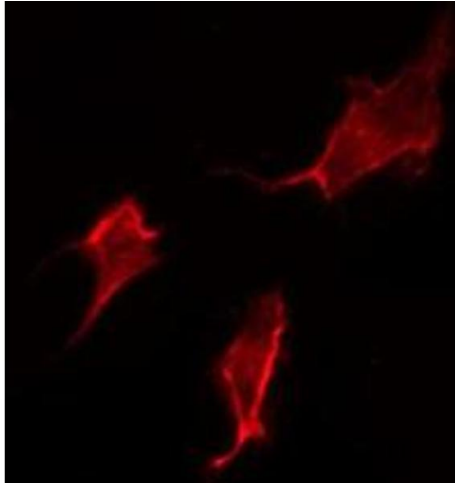
Alternative Name:	DRD1 (DRD1 Products)
Background:	Description: Dopamine receptor whose activity is mediated by G proteins which activate adenylyl cyclase. Gene: DRD1
Molecular Weight:	49kDa
Gene ID:	1812
UniProt:	P21728
Pathways:	cAMP Metabolic Process , Inositol Metabolic Process , Protein targeting to Nucleus , Feeding Behaviour , Smooth Muscle Cell Migration , Regulation of long-term Neuronal Synaptic Plasticity

Application Details

Application Notes:	WB 1:500-1:2000, IHC 1:50-1:100, IF/ICC 1:100-1:500, ELISA(peptide) 1:20000-1:40000
Restrictions:	For Research Use only

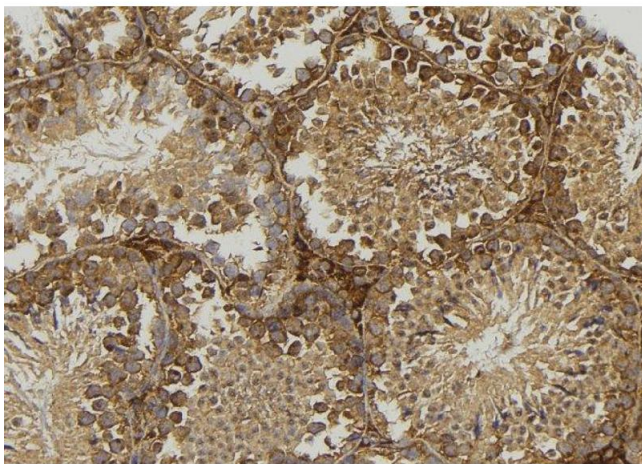
Handling

Format:	Liquid
Concentration:	1 mg/mL
Buffer:	Rabbit IgG in phosphate buffered saline , pH 7.4, 150 mM NaCl, 0.02 % sodium azide and 50 % glycerol.
Preservative:	Sodium azide
Precaution of Use:	This product contains Sodium azide: a POISONOUS AND HAZARDOUS SUBSTANCE which should be handled by trained staff only.
Storage:	-20 °C
Storage Comment:	Store at -20 °C. Stable for 12 months from date of receipt.
Expiry Date:	12 months



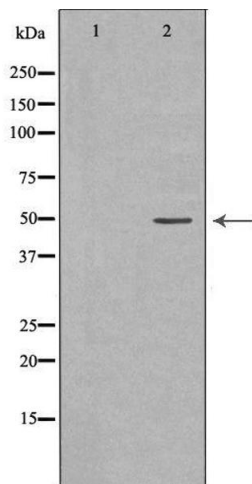
Immunofluorescence (fixed cells)

Image 1. ABIN6277355 staining HepG2 by IF/ICC. The sample were fixed with PFA and permeabilized in 0.1% Triton X-100, then blocked in 10% serum for 45 minutes at 25°C. The primary antibody was diluted at 1/200 and incubated with the sample for 1 hour at 37°C. An Alexa Fluor 594 conjugated goat anti-rabbit IgG (H+L) Ab, diluted at 1/600, was used as the secondary antibody



Immunohistochemistry

Image 2. ABIN6277355 at 1/100 staining Mouse testis tissue by IHC-P. The sample was formaldehyde fixed and a heat mediated antigen retrieval step in citrate buffer was performed. The sample was then blocked and incubated with the antibody for 1.5 hours at 22°C. An HRP conjugated goat anti-rabbit antibody was used as the secondary



Western Blotting

Image 3. Western blot analysis of extracts of HeLa, using DRD1 antibody. The lane on the left is treated with the antigen-specific peptide.