



[Go to Product page](#)

Datasheet for ABIN6266204
anti-DUSP1 antibody (C-Term)

1 Image

Overview

Quantity:	100 µL
Target:	DUSP1
Binding Specificity:	C-Term
Reactivity:	Human, Mouse, Rat
Host:	Rabbit
Clonality:	Polyclonal
Conjugate:	This DUSP1 antibody is un-conjugated
Application:	Western Blotting (WB), ELISA

Product Details

Immunogen:	A synthesized peptide derived from human DUSP1/MKP1, corresponding to a region within C-terminal amino acids.
Isotype:	IgG
Specificity:	DUSP1/MKP1 Antibody detects endogenous levels of total DUSP1/MKP1.
Predicted Reactivity:	Pig,Bovine,Horse,Rabbit,Dog,Chicken
Purification:	The antiserum was purified by peptide affinity chromatography using SulfoLink™ Coupling Resin (Thermo Fisher Scientific).

Target Details

Target:	DUSP1
---------	-------

Target Details

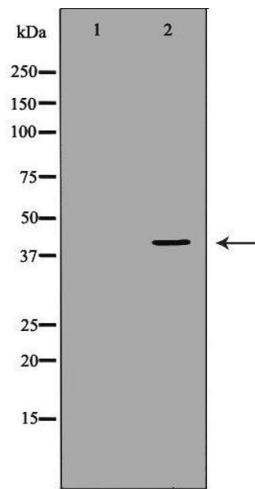
Alternative Name:	DUSP1 (DUSP1 Products)
Background:	Description: Dual specificity phosphatase that dephosphorylates MAP kinase MAPK1/ERK2 on both 'Thr-183' and 'Tyr-185', regulating its activity during the meiotic cell cycle. Gene: DUSP1
Molecular Weight:	39kDa
Gene ID:	1843
UniProt:	P28562

Application Details

Application Notes:	WB 1:500-1:2000, ELISA(peptide) 1:20000-1:40000
Restrictions:	For Research Use only

Handling

Format:	Liquid
Concentration:	1 mg/mL
Buffer:	Rabbit IgG in phosphate buffered saline , pH 7.4, 150 mM NaCl, 0.02 % sodium azide and 50 % glycerol.
Preservative:	Sodium azide
Precaution of Use:	This product contains Sodium azide: a POISONOUS AND HAZARDOUS SUBSTANCE which should be handled by trained staff only.
Storage:	-20 °C
Storage Comment:	Store at -20 °C. Stable for 12 months from date of receipt.
Expiry Date:	12 months



Western Blotting

Image 1. Western blot analysis of extracts of mouse fetal lung tissue lysate, using DUSP1 antibody. The lane on the left is treated with the antigen-specific peptide.