



[Go to Product page](#)

Datasheet for ABIN6266217

## anti-GLRA1 antibody (Internal Region)

### 2 Images

#### Overview

Quantity:	100 µL
Target:	GLRA1
Binding Specificity:	Internal Region
Reactivity:	Human, Mouse, Rat
Host:	Rabbit
Clonality:	Polyclonal
Conjugate:	This GLRA1 antibody is un-conjugated
Application:	Western Blotting (WB), ELISA, Immunohistochemistry (IHC), Immunofluorescence (IF), Immunocytochemistry (ICC)

#### Product Details

Immunogen:	A synthesized peptide derived from human GLRA1, corresponding to a region within the internal amino acids.
Isotype:	IgG
Specificity:	GLRA1 Antibody detects endogenous levels of total GLRA1.
Predicted Reactivity:	Pig,Zebrafish,Bovine,Horse,Sheep,Rabbit,Dog,Chicken
Purification:	The antiserum was purified by peptide affinity chromatography using SulfoLink™ Coupling Resin (Thermo Fisher Scientific).

#### Target Details

Target:	GLRA1
---------	-------

## Target Details

---

Alternative Name: GLRA1 ([GLRA1 Products](#))

---

Background: Description: Glycine receptors are ligand-gated chloride channels (PubMed:23994010, PubMed:25730860). Channel opening is triggered by extracellular glycine (PubMed:2155780, PubMed:7920629, PubMed:14551753, PubMed:16144831, PubMed:22715885, PubMed:22973015, PubMed:25973519, PubMed:9009272). Channel opening is also triggered by taurine and beta-alanine (PubMed:16144831, PubMed:9009272). Channel characteristics depend on the subunit composition, heteropentameric channels are activated by lower glycine levels and display faster desensitization (PubMed:14551753). Plays an important role in the down-regulation of neuronal excitability (PubMed:8298642, PubMed:9009272). Contributes to the generation of inhibitory postsynaptic currents (PubMed:25445488). Channel activity is potentiated by ethanol (PubMed:25973519). Potentiation of channel activity by intoxicating levels of ethanol contribute to the sedative effects of ethanol (By similarity).  
Gene: GLRA1

---

Molecular Weight: 53kDa

---

Gene ID: 2741

---

UniProt: [P23415](#)

---

Pathways: [Synaptic Membrane](#)

---

## Application Details

---

Application Notes: WB 1:500-1:2000, IHC 1:50-1:100, IF/ICC 1:100-1:500, ELISA(peptide) 1:20000-1:40000

---

Restrictions: For Research Use only

---

## Handling

---

Format: Liquid

---

Concentration: 1 mg/mL

---

Buffer: Rabbit IgG in phosphate buffered saline , pH 7.4, 150 mM NaCl, 0.02 % sodium azide and 50 % glycerol.

---

Preservative: Sodium azide

---

Precaution of Use: This product contains Sodium azide: a POISONOUS AND HAZARDOUS SUBSTANCE which should be handled by trained staff only.

---

Storage: -20 °C

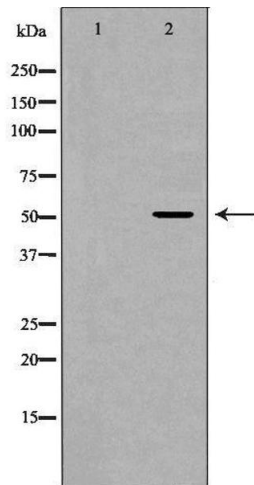
---

## Handling

Storage Comment: Store at -20 °C. Stable for 12 months from date of receipt.

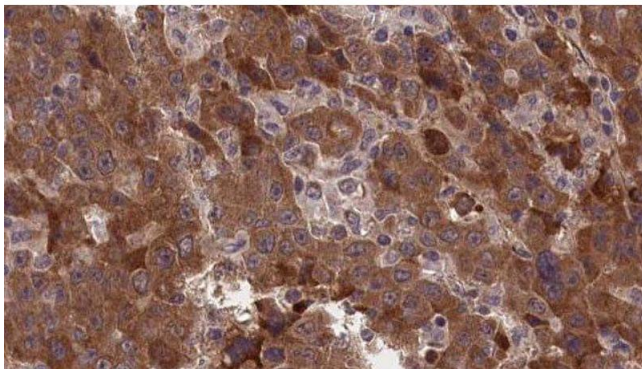
Expiry Date: 12 months

## Images



### Western Blotting

**Image 1.** Western blot analysis of Mouse brain lysate, using GLRA1 Antibody. The lane on the left is treated with the antigen-specific peptide.



### Immunohistochemistry

**Image 2.** ABIN6277375 at 1/100 staining Human liver cancer tissue by IHC-P. The sample was formaldehyde fixed and a heat mediated antigen retrieval step in citrate buffer was performed. The sample was then blocked and incubated with the antibody for 1.5 hours at 22°C. An HRP conjugated goat anti-rabbit antibody was used as the secondary