



[Go to Product page](#)

Datasheet for ABIN6266238

## anti-KISS1 antibody (Internal Region)

### 4 Images

#### Overview

Quantity:	100 µL
Target:	KISS1
Binding Specificity:	Internal Region
Reactivity:	Human, Mouse, Rat
Host:	Rabbit
Clonality:	Polyclonal
Conjugate:	This KISS1 antibody is un-conjugated
Application:	Western Blotting (WB), Immunohistochemistry (IHC), ELISA, Immunocytochemistry (ICC), Immunofluorescence (IF)

#### Product Details

Immunogen:	A synthesized peptide derived from human KISS1, corresponding to a region within the internal amino acids.
Isotype:	IgG
Specificity:	KISS1 Antibody detects endogenous levels of total KISS1.
Predicted Reactivity:	Pig,Zebrafish,Bovine,Horse,Sheep,Dog,Xenopus
Purification:	The antiserum was purified by peptide affinity chromatography using SulfoLink™ Coupling Resin (Thermo Fisher Scientific).

#### Target Details

Target:	KISS1
---------	-------

## Target Details

---

Alternative Name: [KISS1 \(KISS1 Products\)](#)

---

Background: Description: Metastasis suppressor protein in malignant melanomas and in some breast cancers. May regulate events downstream of cell-matrix adhesion, perhaps involving cytoskeletal reorganization. Generates a C-terminally amidated peptide, metastin which functions as the endogenous ligand of the G-protein coupled receptor GPR54. Activation of the receptor inhibits cell proliferation and cell migration, key characteristics of tumor metastasis. Kp-10 is a decapeptide derived from the primary translation product, isolated in conditioned medium of first trimester trophoblast. Kp-10, but not other kisspeptins, increased intracellular Ca<sup>2+</sup> levels in isolated first trimester trophoblasts. Kp-10 is a paracrine/endocrine regulator in fine-tuning trophoblast invasion generated by the trophoblast itself. The receptor is also essential for normal gonadotropin-released hormone physiology and for puberty. The hypothalamic KISS1/GPR54 system is a pivotal factor in central regulation of the gonadotropic axis at puberty and in adulthood.

Gene: KISS1

---

Molecular Weight: 15kDa

---

Gene ID: 3814

---

UniProt: [Q15726](#)

---

Pathways: [Positive Regulation of Peptide Hormone Secretion](#)

---

## Application Details

---

Application Notes: WB 1:500-1:2000, IHC 1:20-1:50, IF/ICC 1:100-1:500, ELISA(peptide) 1:20000-1:40000

---

Restrictions: For Research Use only

---

## Handling

---

Format: Liquid

---

Concentration: 1 mg/mL

---

Buffer: Rabbit IgG in phosphate buffered saline , pH 7.4, 150 mM NaCl, 0.02 % sodium azide and 50 % glycerol.

---

Preservative: Sodium azide

---

Precaution of Use: This product contains Sodium azide: a POISONOUS AND HAZARDOUS SUBSTANCE which should be handled by trained staff only.

---

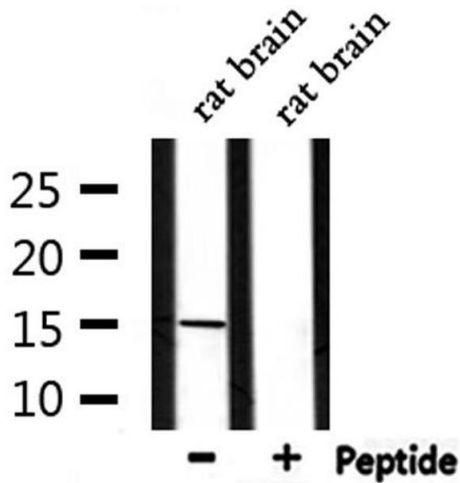
## Handling

Storage: -20 °C

Storage Comment: Store at -20 °C. Stable for 12 months from date of receipt.

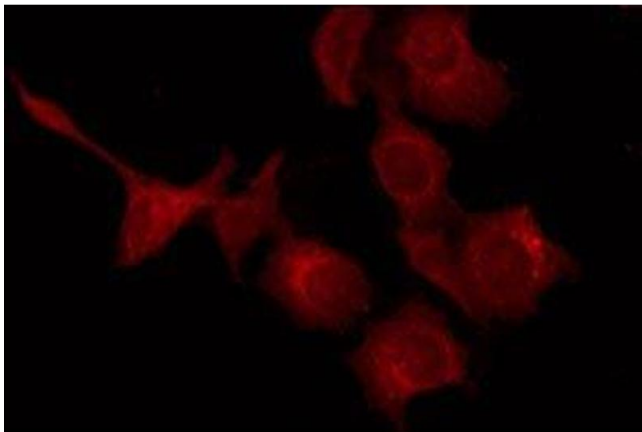
Expiry Date: 12 months

## Images



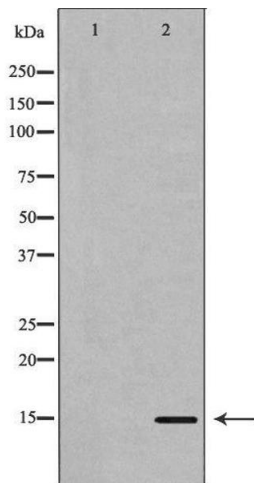
### Western Blotting

**Image 1.** Western blot analysis of extracts from rat brain, using KISS1 Antibody.



### Immunofluorescence (fixed cells)

**Image 2.** ABIN6277390 staining HepG2 by IF/ICC. The sample were fixed with PFA and permeabilized in 0.1% Triton X-100, then blocked in 10% serum for 45 minutes at 25°C. The primary antibody was diluted at 1/200 and incubated with the sample for 1 hour at 37°C. An Alexa Fluor 594 conjugated goat anti-rabbit IgG (H+L) Ab, diluted at 1/600, was used as the secondary antibody



### Western Blotting

**Image 3.** Western blot analysis of extracts of Mouse brain tissue lysate, using KISS1 antibody. The lane on the left is treated with the antigen-specific peptide.

## Images

---

Please check the [product details page](#) for more images. Overall 4 images are available for ABIN6266238.