

Datasheet for ABIN6266241
anti-Kallikrein 2 antibody[Go to Product page](#)

2 Images

Overview

Quantity:	100 µL
Target:	Kallikrein 2 (KLK2)
Reactivity:	Human, Mouse, Rat
Host:	Rabbit
Clonality:	Polyclonal
Conjugate:	This Kallikrein 2 antibody is un-conjugated
Application:	Western Blotting (WB), ELISA, Immunohistochemistry (IHC)

Product Details

Immunogen:	A synthetic peptide of human KLK2
Isotype:	IgG
Specificity:	KLK2 Antibody detects endogenous levels of total KLK2
Cross-Reactivity:	Human, Mouse (Murine), Rat (Rattus)
Purification:	The antiserum was purified by peptide affinity chromatography using SulfoLink™ Coupling Resin (Thermo Fisher Scientific).

Target Details

Target:	Kallikrein 2 (KLK2)
Alternative Name:	KLK2 (KLK2 Products)
Background:	Description: Glandular kallikreins cleave Met-Lys and Arg-Ser bonds in kininogen to release Lys-

Target Details

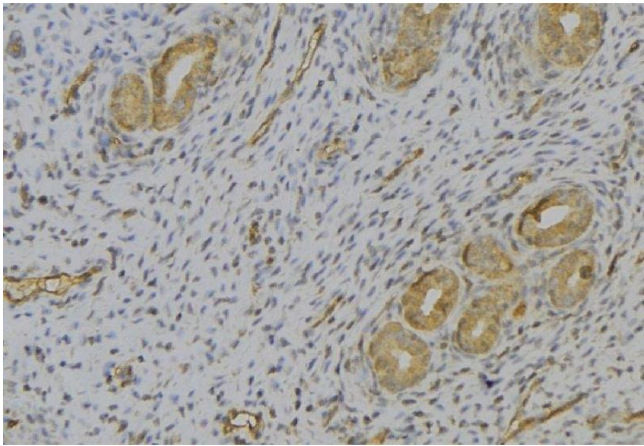
	bradykinin. Gene: KLK2
Molecular Weight:	29kDa
Gene ID:	3817
UniProt:	P20151
Pathways:	Complement System

Application Details

Application Notes:	WB 1:500-1:2000 IHC 1:100-1:200
Restrictions:	For Research Use only

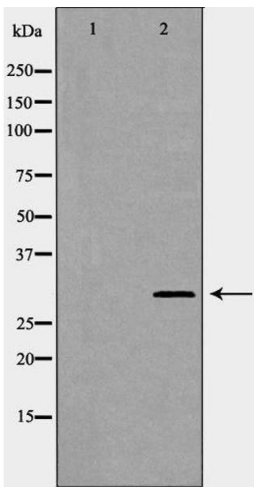
Handling

Format:	Liquid
Concentration:	1 mg/mL
Buffer:	Rabbit IgG in phosphate buffered saline , pH 7.4, 150 mM NaCl, 0.02 % sodium azide and 50 % glycerol.
Preservative:	Sodium azide
Precaution of Use:	This product contains Sodium azide: a POISONOUS AND HAZARDOUS SUBSTANCE which should be handled by trained staff only.
Storage:	-20 °C
Storage Comment:	Store at -20 °C.Stable for 12 months from date of receipt
Expiry Date:	12 months



Immunohistochemistry

Image 1. ABIN6277393 at 1/100 staining Human uterus tissue by IHC-P. The sample was formaldehyde fixed and a heat mediated antigen retrieval step in citrate buffer was performed. The sample was then blocked and incubated with the antibody for 1.5 hours at 22°C. An HRP conjugated goat anti-rabbit antibody was used as the secondary



Western Blotting

Image 2. Western blot analysis of extracts of HeLa lysate, using KLK2 antibody. The lane on the left is treated with the antigen-specific peptide.