



[Go to Product page](#)

Datasheet for ABIN6266244
anti-LHB antibody (Internal Region)

1 Image

Overview

Quantity:	100 µL
Target:	LHB
Binding Specificity:	Internal Region
Reactivity:	Human, Rat, Mouse
Host:	Rabbit
Clonality:	Polyclonal
Conjugate:	This LHB antibody is un-conjugated
Application:	Western Blotting (WB), ELISA, Immunohistochemistry (IHC), Immunofluorescence (IF), Immunocytochemistry (ICC)

Product Details

Immunogen:	A synthesized peptide derived from human LHB, corresponding to a region within the internal amino acids.
Isotype:	IgG
Specificity:	LHB Antibody detects endogenous levels of total LHB.
Purification:	The antiserum was purified by peptide affinity chromatography using SulfoLink™ Coupling Resin (Thermo Fisher Scientific).

Target Details

Target:	LHB
Alternative Name:	LHB (LHB Products)

Target Details

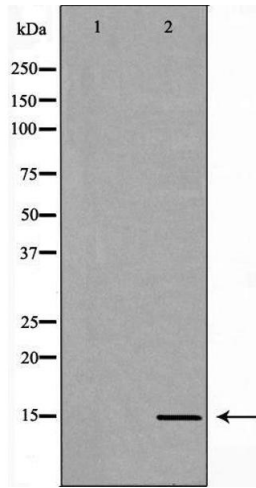
Background:	Description: Promotes spermatogenesis and ovulation by stimulating the testes and ovaries to synthesize steroids. Gene: LHB
Molecular Weight:	15kD
Gene ID:	3972
UniProt:	P01229
Pathways:	Metabolism of Steroid Hormones and Vitamin D , Peptide Hormone Metabolism , Hormone Activity , C21-Steroid Hormone Metabolic Process

Application Details

Application Notes:	WB 1:500-1:2000, IF/ICC 1:100-1:500, IHC 1:50-1:200, ELISA(peptide) 1:20000-1:40000
Restrictions:	For Research Use only

Handling

Format:	Liquid
Concentration:	1 mg/mL
Buffer:	Rabbit IgG in phosphate buffered saline , pH 7.4, 150 mM NaCl, 0.02 % sodium azide and 50 % glycerol.
Preservative:	Sodium azide
Precaution of Use:	This product contains Sodium azide: a POISONOUS AND HAZARDOUS SUBSTANCE which should be handled by trained staff only.
Storage:	-20 °C
Storage Comment:	Store at -20 °C. Stable for 12 months from date of receipt.
Expiry Date:	12 months



Western Blotting

Image 1. Western blot analysis of extracts of Mouse pituitary , using LHB antibody. The lane on the left is treated with the antigen-specific peptide.