

Datasheet for ABIN6266259  
**anti-P2RY4 antibody (C-Term)**

## 3 Images

[Go to Product page](#)

## Overview

Quantity:	100 µL
Target:	P2RY4
Binding Specificity:	C-Term
Reactivity:	Human, Mouse, Rat
Host:	Rabbit
Clonality:	Polyclonal
Conjugate:	This P2RY4 antibody is un-conjugated
Application:	Western Blotting (WB), ELISA, Immunohistochemistry (IHC), Immunofluorescence (IF), Immunocytochemistry (ICC)

## Product Details

Immunogen:	A synthesized peptide derived from human P2RY4, corresponding to a region within C-terminal amino acids.
Isotype:	IgG
Specificity:	P2RY4 Antibody detects endogenous levels of total P2RY4.
Purification:	The antiserum was purified by peptide affinity chromatography using SulfoLink™ Coupling Resin (Thermo Fisher Scientific).

## Target Details

Target:	P2RY4
Alternative Name:	P2RY4 ( <a href="#">P2RY4 Products</a> )

## Target Details

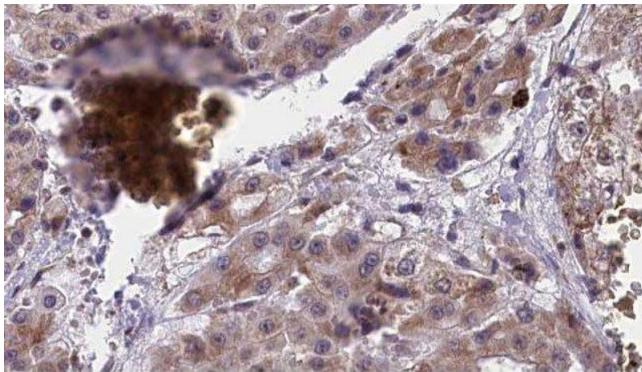
Background:	Description: Receptor for UTP and UDP coupled to G-proteins that activate a phosphatidylinositol-calcium second messenger system. Not activated by ATP or ADP. Gene: P2RY4
Molecular Weight:	41kDa
Gene ID:	5030
UniProt:	<a href="#">P51582</a>

## Application Details

Application Notes:	WB 1:500-1:2000, IHC 1:50-1:100, IF/ICC 1:100-1:500, ELISA(peptide) 1:20000-1:40000
Restrictions:	For Research Use only

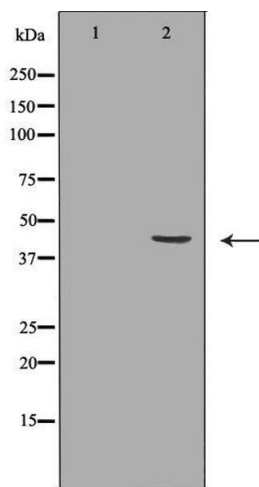
## Handling

Format:	Liquid
Concentration:	1 mg/mL
Buffer:	Rabbit IgG in phosphate buffered saline , pH 7.4, 150 mM NaCl, 0.02 % sodium azide and 50 % glycerol.
Preservative:	Sodium azide
Precaution of Use:	This product contains Sodium azide: a POISONOUS AND HAZARDOUS SUBSTANCE which should be handled by trained staff only.
Storage:	-20 °C
Storage Comment:	Store at -20 °C. Stable for 12 months from date of receipt.
Expiry Date:	12 months



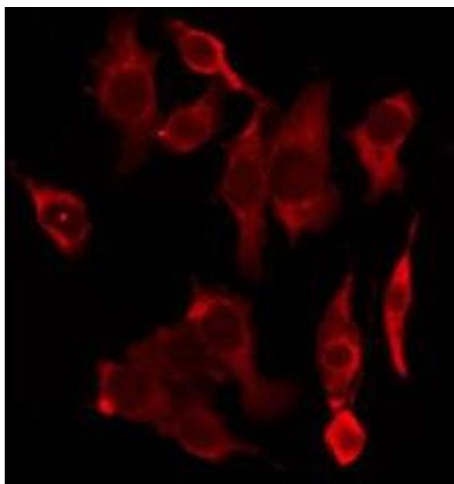
#### Immunohistochemistry

**Image 1.** ABIN6277418 at 1/100 staining Human liver cancer tissue by IHC-P. The sample was formaldehyde fixed and a heat mediated antigen retrieval step in citrate buffer was performed. The sample was then blocked and incubated with the antibody for 1.5 hours at 22°C. An HRP conjugated goat anti-rabbit antibody was used as the secondary



#### Western Blotting

**Image 2.** Western blot analysis of extracts of K562 lysate, using P2RY4 antibody. The lane on the left is treated with the antigen-specific peptide.



#### Immunofluorescence (fixed cells)

**Image 3.** ABIN6277418 staining HeLa by IF/ICC. The sample were fixed with PFA and permeabilized in 0.1% Triton X-100, then blocked in 10% serum for 45 minutes at 25°C. The primary antibody was diluted at 1/200 and incubated with the sample for 1 hour at 37°C. An Alexa Fluor 594 conjugated goat anti-rabbit IgG (H+L) Ab, diluted at 1/600, was used as the secondary antibody