

Datasheet for ABIN6266276

**anti-SUMO4 antibody**

## 2 Images

[Go to Product page](#)

## Overview

|              |  |
|--------------|--|
| Quantity:    | 100 µL   |
| Target:      | SUMO4  |
| Reactivity:  | Human, Mouse, Rat  |
| Host:        | Rabbit   |
| Clonality:   | Polyclonal   |
| Conjugate:   | This SUMO4 antibody is un-conjugated                     |
| Application: | Western Blotting (WB), Immunohistochemistry (IHC), ELISA |

## Product Details

|                   |   |
|-------------------|---|
| Immunogen:        | A synthetic peptide of human SUMO4  |
| Isotype:          | IgG   |
| Specificity:      | SUMO4 Antibody detects endogenous levels of total SUMO4   |
| Cross-Reactivity: | Human, Mouse (Murine), Rat (Rattus)   |
| Purification:     | The antiserum was purified by peptide affinity chromatography using SulfoLink™ Coupling Resin (Thermo Fisher Scientific). |

## Target Details

|                   |   |
|-------------------|---|
| Target:           | SUMO4   |
| Alternative Name: | SUMO4 ( <a href="#">SUMO4 Products</a> )  |
| Background:       | Description: Ubiquitin-like protein which can be covalently attached to target lysines as a |

## Target Details

monomer. Does not seem to be involved in protein degradation and may modulate protein subcellular localization, stability or activity. Upon oxidative stress, conjugates to various anti-oxidant enzymes, chaperones, and stress defense proteins. May also conjugate to NFKBIA, TFAP2A and FOS, negatively regulating their transcriptional activity, and to NR3C1, positively regulating its transcriptional activity. Covalent attachment to its substrates requires prior activation by the E1 complex SAE1-SAE2 and linkage to the E2 enzyme UBE2I.

Gene: SUMO4

Molecular Weight: 12kDa

Gene ID: 387082

UniProt: [Q6EEV6](#)

## Application Details

Application Notes: WB 1:1000-1:2000 IHC 1:100-1:300

Restrictions: For Research Use only

## Handling

Format: Liquid

Concentration: 1 mg/mL

Buffer: Rabbit IgG in phosphate buffered saline , pH 7.4, 150 mM NaCl, 0.02 % sodium azide and 50 % glycerol.

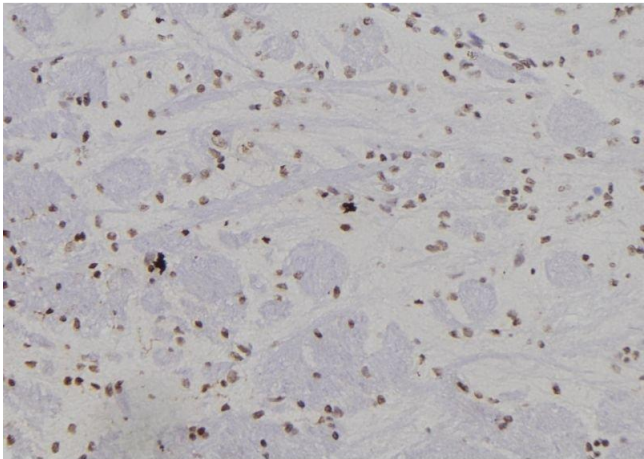
Preservative: Sodium azide

Precaution of Use: This product contains Sodium azide: a POISONOUS AND HAZARDOUS SUBSTANCE which should be handled by trained staff only.

Storage: -20 °C

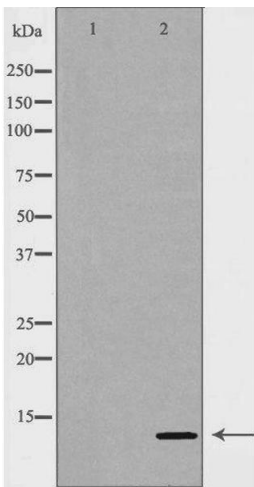
Storage Comment: Store at -20 °C.Stable for 12 months from date of receipt

Expiry Date: 12 months



### Immunohistochemistry

**Image 1.** ABIN6277441 at 1/100 staining Rat brain tissue by IHC-P. The sample was formaldehyde fixed and a heat mediated antigen retrieval step in citrate buffer was performed. The sample was then blocked and incubated with the antibody for 1.5 hours at 22°C. An HRP conjugated goat anti-rabbit antibody was used as the secondary



### Western Blotting

**Image 2.** Western blot analysis of Hepg2 whole cell lysates, using SUMO4 Antibody. The lane on the left is treated with the antigen-specific peptide.