



[Go to Product page](#)

Datasheet for ABIN6266356  
**anti-PCK1 antibody (C-Term)**

3 Images

### Overview

Quantity:	100 µL
Target:	PCK1
Binding Specificity:	C-Term
Reactivity:	Human, Mouse, Rat
Host:	Rabbit
Clonality:	Polyclonal
Conjugate:	This PCK1 antibody is un-conjugated
Application:	Western Blotting (WB), ELISA, Immunohistochemistry (IHC), Immunofluorescence (IF), Immunocytochemistry (ICC)

### Product Details

Immunogen:	A synthesized peptide derived from human PCK1, corresponding to a region within C-terminal amino acids.
Isotype:	IgG
Specificity:	PCK1 Antibody detects endogenous levels of total PCK1.
Predicted Reactivity:	Bovine, Sheep, Rabbit, Dog
Purification:	The antiserum was purified by peptide affinity chromatography using SulfoLink™ Coupling Resin (Thermo Fisher Scientific).

### Target Details

Target:	PCK1
---------	------

## Target Details

---

Alternative Name:	<a href="#">PCK1 (PCK1 Products)</a>
Background:	Description: Catalyzes the conversion of oxaloacetate (OAA) to phosphoenolpyruvate (PEP), the rate-limiting step in the metabolic pathway that produces glucose from lactate and other precursors derived from the citric acid cycle. Gene: PCK1
Molecular Weight:	69kDa
Gene ID:	5105
UniProt:	<a href="#">P35558</a>
Pathways:	<a href="#">Positive Regulation of Peptide Hormone Secretion, Carbohydrate Homeostasis</a>

## Application Details

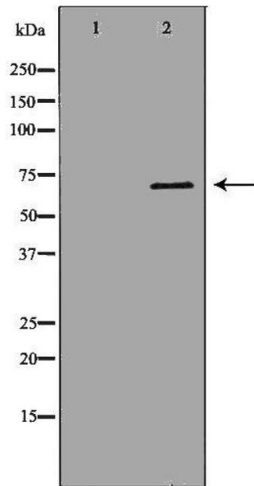
---

Application Notes:	WB 1:500-1:2000, IHC 1:50-1:200, IF/ICC 1:100-1:500, ELISA(peptide) 1:20000-1:40000
Restrictions:	For Research Use only

## Handling

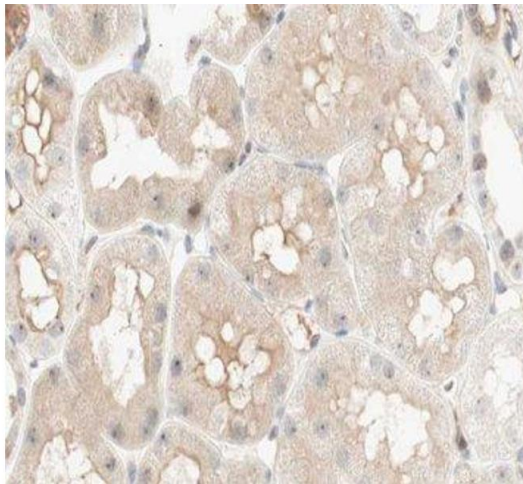
---

Format:	Liquid
Concentration:	1 mg/mL
Buffer:	Rabbit IgG in phosphate buffered saline , pH 7.4, 150 mM NaCl, 0.02 % sodium azide and 50 % glycerol.
Preservative:	Sodium azide
Precaution of Use:	This product contains Sodium azide: a POISONOUS AND HAZARDOUS SUBSTANCE which should be handled by trained staff only.
Storage:	-20 °C
Storage Comment:	Store at -20 °C. Stable for 12 months from date of receipt.
Expiry Date:	12 months



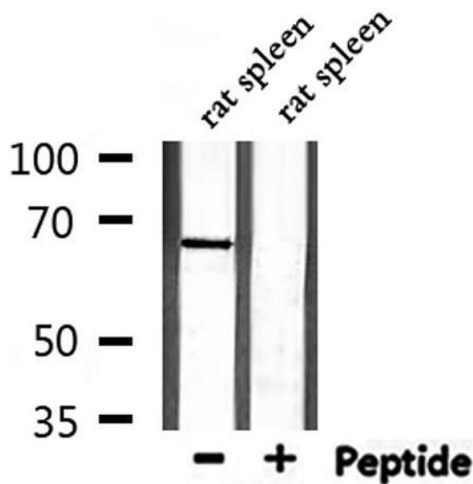
### Western Blotting

**Image 1.** Western blot analysis of Jurkat whole cell lysates, using PCK1 Antibody. The lane on the left is treated with the antigen-specific peptide.



### Immunohistochemistry

**Image 2.** ABIN6277033 at 1/100 staining human kidney tissue sections by IHC-P. The tissue was formaldehyde fixed and a heat mediated antigen retrieval step in citrate buffer was performed. The tissue was then blocked and incubated with the antibody for 1.5 hours at 22°C. An HRP conjugated goat anti-rabbit antibody was used as the secondary



### Western Blotting

**Image 3.** Western blot analysis of extracts from rat spleen, using PCK1 Antibody.