



[Go to Product page](#)

Datasheet for ABIN6266367  
**anti-LRRC42 antibody (N-Term)**

1 Image

Overview

Quantity:	100 µL
Target:	LRRC42
Binding Specificity:	N-Term
Reactivity:	Human, Mouse, Rat
Host:	Rabbit
Clonality:	Polyclonal
Conjugate:	This LRRC42 antibody is un-conjugated
Application:	ELISA, Western Blotting (WB)

Product Details

Immunogen:	A synthesized peptide derived from human LRRC42, corresponding to a region within N-terminal amino acids.
Isotype:	IgG
Specificity:	LRRC42 Antibody detects endogenous levels of total LRRC42.
Predicted Reactivity:	Pig,Bovine,Horse,Sheep,Rabbit,Dog
Purification:	The antiserum was purified by peptide affinity chromatography using SulfoLink™ Coupling Resin (Thermo Fisher Scientific).

Target Details

Target:	LRRC42
---------	--------

## Target Details

---

Alternative Name: LRRC42 ([LRRC42 Products](#))

Background: Gene: LRRC42

Molecular Weight: 49 kDa

Gene ID: 115353

UniProt: [Q9Y546](#)

## Application Details

---

Application Notes: WB 1:500-1:2000, ELISA(peptide) 1:20000-1:40000

Restrictions: For Research Use only

## Handling

---

Format: Liquid

Concentration: 1 mg/mL

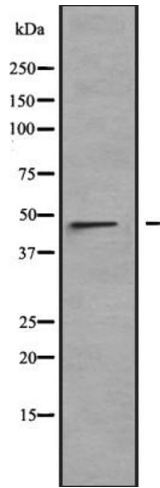
Buffer: Rabbit IgG in phosphate buffered saline, pH 7.4, 150 mM NaCl, 0.02 % sodium azide and 50 % glycerol.

Preservative: Sodium azide

Precaution of Use: This product contains Sodium azide: a POISONOUS AND HAZARDOUS SUBSTANCE which should be handled by trained staff only.

Storage: -20 °C

Expiry Date: 12 months



### Western Blotting

**Image 1.** Western blot analysis of LRRC42 expression in HT1080 cell lysate, The lane on the left is treated with the antigen-specific peptide.