

Datasheet for ABIN6266436

anti-Combined Host Cell Proteins antibody



[Go to Product page](#)

2 Images

Overview

Quantity:	100 µg
Target:	Combined Host Cell Proteins
Reactivity:	E. coli
Host:	Rabbit
Clonality:	Polyclonal
Conjugate:	Un-conjugated
Application:	ELISA, Western Blotting (WB), Two Dimensional Polyacrylamide Gel Electrophoresis (2D-PAGE)

Product Details

Purpose:	Anti-Host Cell Proteins Antibody recognizes high and low molecular weight protein fractions from E.coli.
Immunogen:	Immunogen: Anti-Host Cell Proteins Antibody was prepared by repeated immunizations with a full range of high molecular weight (HMW) and low molecular weight (LMW) proteins from E.Coli (BL21). Immunogen Type: Native Protein
Isotype:	IgG
Characteristics:	Synonyms: rabbit anti-Host Cell Protein antibody, rabbit anti-HCP antibody, rabbit anti-E.Coli HCP antibody
Purification:	Host Cell Protein A purified antibody is directed against high molecular weight and low molecular weight E.coli Host Cell Proteins.
Sterility:	Sterile filtered

Target Details

Target:	Combined Host Cell Proteins
Background:	Background: Anti-Host Cell Proteins Antibody recognizes high and low molecular weight protein fractions from E.coli. This antibody has been validated by 2D electrophoresis western blot to assure highest possible coverage of E.coli HCP. Host Cell Proteins are process-related impurities derived from a host cell expression system that may be present in trace amounts in a final drug substance. HCP Antibodies are used to detect impurities in biologically-based therapeutics. Detecting impurities often unseen by 1-D electrophoresis, a 2D electrophoresis western blot analysis delivers more complete insight into the immunocoverage of protein components of the host cell lysate.

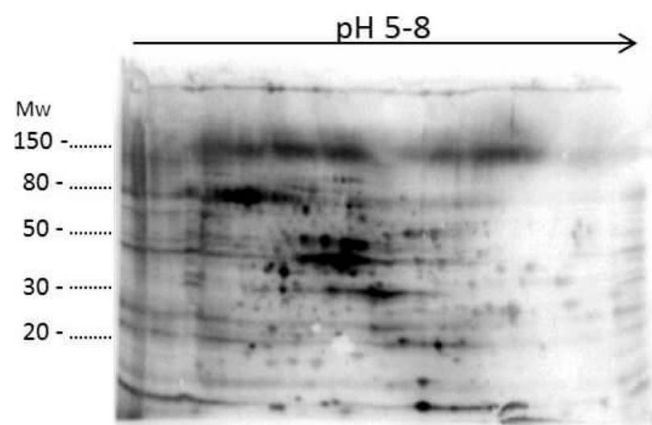
Application Details

Application Notes:	Application Note: Anti-Host Cell Proteins Antibody detects over 300 E.coli proteins and has been tested by 2D-Page, western blotting, and ELISA. Western Blot Dilution: 1:500-1:1000 ELISA Dilution: 1:1000-1:2000
--------------------	--

Restrictions:	For Research Use only
---------------	-----------------------

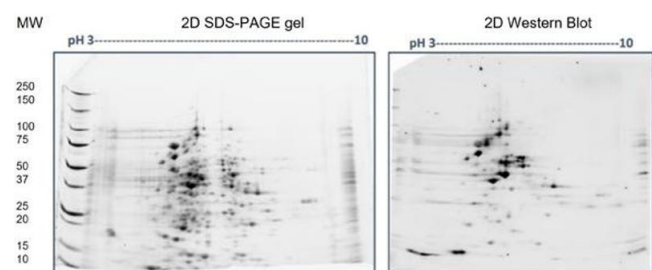
Handling

Format:	Liquid
Concentration:	0.82 mg/mL
Buffer:	Buffer: 0.02 M Potassium Phosphate, 0.15 M Sodium Chloride, pH 7.2 Stabilizer: None Preservative: 0.01 % (w/v) Sodium Azide
Preservative:	Sodium azide
Precaution of Use:	This product contains Sodium azide: a POISONOUS AND HAZARDOUS SUBSTANCE which should be handled by trained staff only.
Storage:	4 °C,-20 °C
Storage Comment:	Store vial at -20° C prior to opening. Aliquot contents and freeze at -20° C or below for extended storage. Avoid cycles of freezing and thawing. Centrifuge product if not completely clear after standing at room temperature. This product is stable for several weeks at 4° C as an undiluted liquid. Dilute only prior to immediate use.
Expiry Date:	12 months



Western Blotting

Image 1. 2D Western Blot of anti-E.coli Host Cell Protein antibody. Load: 35 µg Total HCP. Primary antibody: Rabbit anti-HCP antibody at 1:200 for overnight at 4 °C. Secondary antibody: Goat anti-rabbit secondary antibody at 1:10,000 for 30 min at RT. Block: MB-070 for 1 hour at RT.



Two Dimensional Polyacrylamide Gel Electrophoresis

Image 2. 2D SDS-PAGE: Load/Strip: 100 µg E. coli HCP total lysate/strip. 2D Oriole stained gels. Western Blot of Anti-E.coli Total Host Cell Protein antibody: Primary antibody: Rabbit Anti-E.coli Total Host Cell Protein at 1:500 overnight at 2-8 °C. Secondary antibody: Goat anti-Rabbit IgG Cy5 Conjugated (p/n 611-110-122) at RT for 2hrs. Block: Blocking Buffer (p/n MB-070) for 1 hour at RT.