

Datasheet for ABIN6280765  
**anti-NEURL antibody (Ser351)**



[Go to Product page](#)

1 Image

## Overview

Quantity:	50 µL
Target:	NEURL
Binding Specificity:	Ser351
Reactivity:	Human, Mouse, Rat
Host:	Rabbit
Clonality:	Polyclonal
Conjugate:	This NEURL antibody is un-conjugated
Application:	Western Blotting (WB), ELISA

## Product Details

Immunogen:	Synthesized peptide derived from human Neu around the non-phosphorylation site of Y1112.
Isotype:	IgG
Specificity:	Neu Polyclonal Antibody detects endogenous levels of Neu protein.
Characteristics:	Rabbit Polyclonal to Neu.
Purification:	The antibody was affinity-purified from rabbit antiserum by affinity-chromatography using epitope-specific immunogen.

## Target Details

Target:	NEURL
Alternative Name:	Neu ( <a href="#">NEURL Products</a> )

## Target Details

Molecular Weight:	60 kDa
Gene ID:	2064
UniProt:	<a href="#">P04626</a>
Pathways:	<a href="#">Notch Signaling</a> , <a href="#">EGFR Signaling Pathway</a>

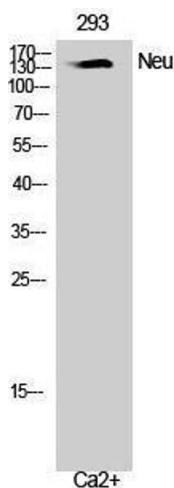
## Application Details

Application Notes:	WB 1:500-1:2000, ELISA 1:10000,
Restrictions:	For Research Use only

## Handling

Format:	Liquid
Concentration:	1 mg/mL
Buffer:	Liquid in PBS containing 50 % glycerol, 0.5 % BSA and 0.02 % sodium azide.
Preservative:	Sodium azide
Precaution of Use:	This product contains Sodium azide: a POISONOUS AND HAZARDOUS SUBSTANCE which should be handled by trained staff only.
Handling Advice:	Avoid repeated freeze/thaw cycles.
Storage:	-20 °C
Storage Comment:	Store at -20°C.

## Images



### Western Blotting

Image 1.