

Datasheet for ABIN6281720

## anti-Caspase-8 p18 antibody (cleaved, Ser217)



[Go to Product page](#)

### 2 Images

#### Overview

Quantity:	50 µL
Target:	Caspase-8 p18
Binding Specificity:	cleaved, Ser217
Reactivity:	Human
Host:	Rabbit
Clonality:	Polyclonal
Conjugate:	This Caspase-8 p18 antibody is un-conjugated
Application:	Western Blotting (WB), ELISA

#### Product Details

Isotype:	IgG
Specificity:	Cleaved-Caspase-8 p18 (S217) Polyclonal Antibody detects endogenous levels of Cleaved-Caspase-8 p18 (S217) protein.
Characteristics:	Rabbit Polyclonal to Cleaved-Caspase-8 p18 (S217).
Purification:	The antibody was affinity-purified from rabbit antiserum by affinity-chromatography using epitope-specific immunogen.

#### Target Details

Target:	Caspase-8 p18
Alternative Name:	Caspase-8 p18 ( <a href="#">Caspase-8 p18 Products</a> )

### Target Details

Gene ID:	841
UniProt:	<a href="#">Q14790</a>

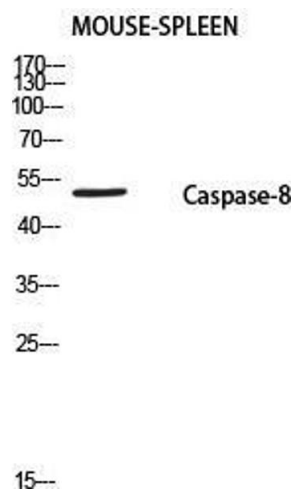
### Application Details

Application Notes:	WB 1:500-1:2000, ELISA 1:10000,
Restrictions:	For Research Use only

### Handling

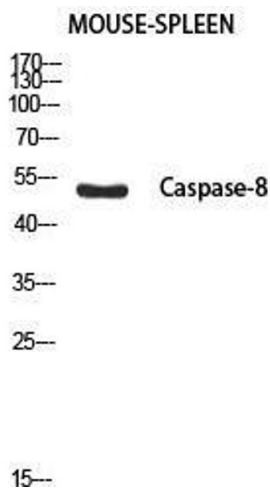
Format:	Liquid
Concentration:	1 mg/mL
Buffer:	Liquid in PBS containing 50 % glycerol, 0.5 % BSA and 0.02 % sodium azide.
Preservative:	Sodium azide
Precaution of Use:	This product contains Sodium azide: a POISONOUS AND HAZARDOUS SUBSTANCE which should be handled by trained staff only.
Handling Advice:	Avoid repeated freeze/thaw cycles.
Storage:	-20 °C
Storage Comment:	Store at -20°C.

### Images



**Western Blotting**

**Image 1.** Western Blot (WB) analysis of Mouse Spleen using Caspase-8 P18 antibody.



Western Blotting

**Image 2.** Western Blot (WB) analysis of Mouse Spleen using Cleaved-Caspase-8 p18 (S217) antibody.