

Datasheet for ABIN6282907  
**anti-GRK2 antibody (Ser129)**



[Go to Product page](#)

2 Images

## Overview

Quantity:	50 µL
Target:	GRK2 (ADRBK1)
Binding Specificity:	Ser129
Reactivity:	Human, Mouse, Rat
Host:	Rabbit
Clonality:	Polyclonal
Conjugate:	This GRK2 antibody is un-conjugated
Application:	Western Blotting (WB), ELISA

## Product Details

Immunogen:	Synthesized peptide derived from human GRK 2 around the non-phosphorylation site of Y86.
Isotype:	IgG
Specificity:	GRK 2 Polyclonal Antibody detects endogenous levels of GRK 2 protein.
Characteristics:	Rabbit Polyclonal to GRK 2.
Purification:	The antibody was affinity-purified from rabbit antiserum by affinity-chromatography using epitope-specific immunogen.

## Target Details

Target:	GRK2 (ADRBK1)
Alternative Name:	GRK 2 ( <a href="#">ADRBK1 Products</a> )

## Target Details

---

Molecular Weight:	60 kDa
Gene ID:	156
UniProt:	<a href="#">P25098</a>
Pathways:	<a href="#">EGFR Signaling Pathway</a> , <a href="#">Neurotrophin Signaling Pathway</a> , <a href="#">Regulation of G-Protein Coupled Receptor Protein Signaling</a> , <a href="#">CXCR4-mediated Signaling Events</a> , <a href="#">G-protein mediated Events</a> , <a href="#">Interaction of EGFR with phospholipase C-gamma</a> , <a href="#">Thromboxane A2 Receptor Signaling</a>

## Application Details

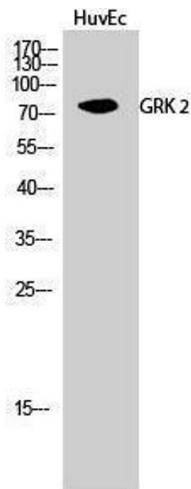
---

Application Notes:	WB 1:500-1:2000, ELISA 1:10000,
Restrictions:	For Research Use only

## Handling

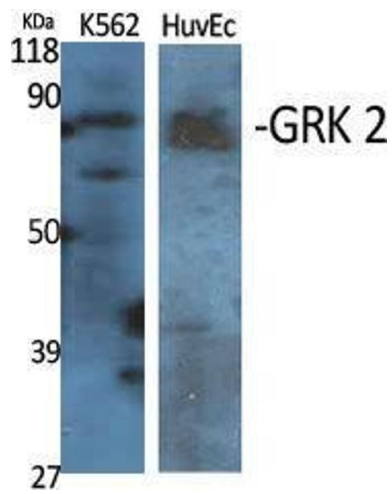
---

Format:	Liquid
Concentration:	1 mg/mL
Buffer:	Liquid in PBS containing 50 % glycerol, 0.5 % BSA and 0.02 % sodium azide.
Preservative:	Sodium azide
Precaution of Use:	This product contains Sodium azide: a POISONOUS AND HAZARDOUS SUBSTANCE which should be handled by trained staff only.
Handling Advice:	Avoid repeated freeze/thaw cycles.
Storage:	-20 °C
Storage Comment:	Store at -20°C.



### Western Blotting

**Image 1.**



### Western Blotting

**Image 2.** Western Blot (WB) analysis of specific cells using GRK 2 Polyclonal Antibody.