

Datasheet for ABIN6283610
anti-SREBF1 antibody (Tyr1175)



[Go to Product page](#)

2 Images

Overview

Quantity:	50 µL
Target:	SREBF1
Binding Specificity:	Tyr1175
Reactivity:	Human, Rat
Host:	Rabbit
Clonality:	Polyclonal
Conjugate:	This SREBF1 antibody is un-conjugated
Application:	Western Blotting (WB), ELISA, Immunohistochemistry (IHC)

Product Details

Immunogen:	Synthesized peptide derived from human SREBP-1 around the non-phosphorylation site of S439.
Isotype:	IgG
Specificity:	SREBP-1 Polyclonal Antibody detects endogenous levels of SREBP-1 protein.
Characteristics:	Rabbit Polyclonal to SREBP-1.
Purification:	The antibody was affinity-purified from rabbit antiserum by affinity-chromatography using epitope-specific immunogen.

Target Details

Target:	SREBF1
---------	--------

Target Details

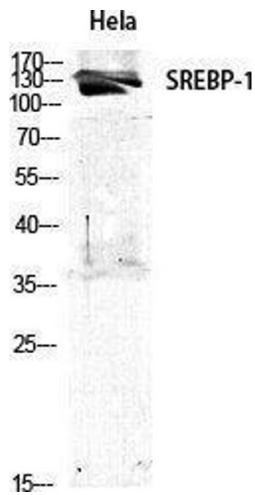
Alternative Name:	SREBP-1 (SREBF1 Products)
Molecular Weight:	132 kDa
Gene ID:	6720
UniProt:	P36956
Pathways:	AMPK Signaling , Caspase Cascade in Apoptosis , Negative Regulation of Hormone Secretion , Regulation of Lipid Metabolism by PPARalpha

Application Details

Application Notes:	WB 1:500-1:2000, IHC 1:100-1:300, ELISA 1:20000,
Restrictions:	For Research Use only

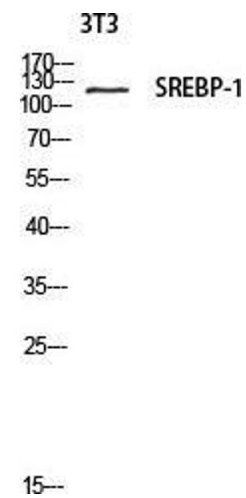
Handling

Format:	Liquid
Concentration:	1 mg/mL
Buffer:	Liquid in PBS containing 50 % glycerol, 0.5 % BSA and 0.02 % sodium azide.
Preservative:	Sodium azide
Precaution of Use:	This product contains Sodium azide: a POISONOUS AND HAZARDOUS SUBSTANCE which should be handled by trained staff only.
Handling Advice:	Avoid repeated freeze/thaw cycles.
Storage:	-20 °C
Storage Comment:	Store at -20°C.



Western Blotting

Image 1.



Western Blotting

Image 2. Western Blot (WB) analysis of 3T3 lysis using SREBP-1 antibody.