

Datasheet for ABIN6284782

anti-Phospholipase C gamma 2 antibody (Thr246)[Go to Product page](#)**1** Image

Overview

Quantity:	50 µL
Target:	Phospholipase C gamma 2 (PLCG2)
Binding Specificity:	Thr246
Reactivity:	Human, Rat, Mouse
Host:	Rabbit
Clonality:	Polyclonal
Conjugate:	This Phospholipase C gamma 2 antibody is un-conjugated
Application:	Western Blotting (WB), Immunohistochemistry (IHC), ELISA

Product Details

Immunogen:	Synthesized peptide derived from human PLC gamma2 around the non-phosphorylation site of Y753.
Isotype:	IgG
Specificity:	PLC γ 2 Polyclonal Antibody detects endogenous levels of PLC γ 2 protein.
Characteristics:	Rabbit Polyclonal to PLC γ 2.
Purification:	The antibody was affinity-purified from rabbit antiserum by affinity-chromatography using epitope-specific immunogen.

Target Details

Target:	Phospholipase C gamma 2 (PLCG2)
---------	---------------------------------

Target Details

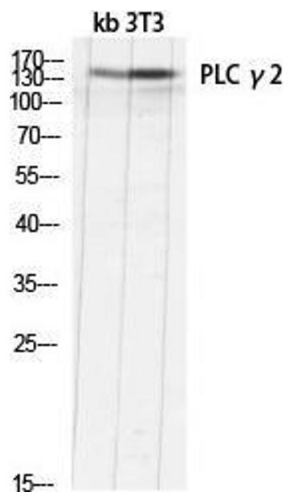
Alternative Name:	PLC Gamma2 (PLCG2 Products)
Molecular Weight:	40 kDa
Gene ID:	5336
UniProt:	P16885
Pathways:	RTK Signaling , WNT Signaling , Fc-epsilon Receptor Signaling Pathway , Inositol Metabolic Process , Myometrial Relaxation and Contraction , Toll-Like Receptors Cascades , VEGF Signaling , BCR Signaling

Application Details

Application Notes:	WB 1:500-1:2000, IHC 1:100-1:300, ELISA 1:5000,
Restrictions:	For Research Use only

Handling

Format:	Liquid
Concentration:	1 mg/mL
Buffer:	Liquid in PBS containing 50 % glycerol, 0.5 % BSA and 0.02 % sodium azide.
Preservative:	Sodium azide
Precaution of Use:	This product contains Sodium azide: a POISONOUS AND HAZARDOUS SUBSTANCE which should be handled by trained staff only.
Handling Advice:	Avoid repeated freeze/thaw cycles.
Storage:	-20 °C
Storage Comment:	Store at -20°C.



Western Blotting

Image 1. Western Blot (WB) analysis of kb 3T3 lysis using PLC gamma2 antibody.