

Datasheet for ABIN6284979
anti-EPH Receptor A7 antibody (Ser347)



[Go to Product page](#)

1 Image

Overview

Quantity:	50 µL
Target:	EPH Receptor A7 (EPHA7)
Binding Specificity:	Ser347
Reactivity:	Human, Rat, Mouse
Host:	Rabbit
Clonality:	Polyclonal
Conjugate:	This EPH Receptor A7 antibody is un-conjugated
Application:	Western Blotting (WB), ELISA

Product Details

Immunogen:	Synthesized peptide derived from human EphA7 around the non-phosphorylation site of Y791.
Isotype:	IgG
Specificity:	EphA7 Polyclonal Antibody detects endogenous levels of EphA7 protein.
Characteristics:	Rabbit Polyclonal to EphA7.
Purification:	The antibody was affinity-purified from rabbit antiserum by affinity-chromatography using epitope-specific immunogen.

Target Details

Target:	EPH Receptor A7 (EPHA7)
Alternative Name:	EphA7 (EPHA7 Products)

Target Details

Molecular Weight: 55 kDa

Gene ID: 2045

UniProt: [Q15375](#)

Pathways: [RTK Signaling](#)

Application Details

Application Notes: WB 1:500-1:2000, ELISA 1:10000,

Restrictions: For Research Use only

Handling

Format: Liquid

Concentration: 1 mg/mL

Buffer: Liquid in PBS containing 50 % glycerol, 0.5 % BSA and 0.02 % sodium azide.

Preservative: Sodium azide

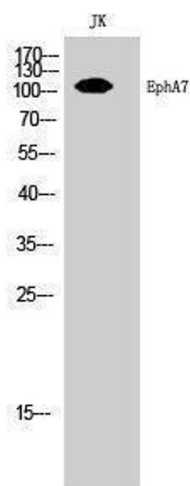
Precaution of Use: This product contains Sodium azide: a POISONOUS AND HAZARDOUS SUBSTANCE which should be handled by trained staff only.

Handling Advice: Avoid repeated freeze/thaw cycles.

Storage: -20 °C

Storage Comment: Store at -20°C.

Images



Western Blotting

Image 1.