

Datasheet for ABIN6285592  
**anti-CYBB antibody (C-Term)**



[Go to Product page](#)

2 Images

## Overview

Quantity:	50 µL
Target:	CYBB
Binding Specificity:	C-Term
Reactivity:	Human, Mouse, Rat
Host:	Rabbit
Clonality:	Polyclonal
Conjugate:	This CYBB antibody is un-conjugated
Application:	Western Blotting (WB), ELISA

## Product Details

Immunogen:	Synthesized peptide derived from the C-terminal region of human gp91-phox.
Isotype:	IgG
Specificity:	Gp91-phox Polyclonal Antibody detects endogenous levels of gp91-phox protein.
Characteristics:	Rabbit Polyclonal to gp91-phox.
Purification:	The antibody was affinity-purified from rabbit antiserum by affinity-chromatography using epitope-specific immunogen.

## Target Details

Target:	CYBB
Alternative Name:	Gp91-Phox ( <a href="#">CYBB Products</a> )

## Target Details

Molecular Weight: 65 kDa

Gene ID: 1536

UniProt: [P04839](#)

## Application Details

Application Notes: WB 1:500-1:2000, ELISA 1:10000,

Restrictions: For Research Use only

## Handling

Format: Liquid

Concentration: 1 mg/mL

Buffer: Liquid in PBS containing 50 % glycerol, 0.5 % BSA and 0.02 % sodium azide.

Preservative: Sodium azide

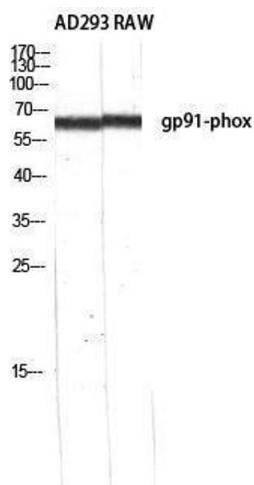
Precaution of Use: This product contains Sodium azide: a POISONOUS AND HAZARDOUS SUBSTANCE which should be handled by trained staff only.

Handling Advice: Avoid repeated freeze/thaw cycles.

Storage: -20 °C

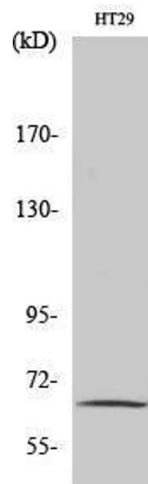
Storage Comment: Store at -20°C.

## Images



### Western Blotting

Image 1.



### Western Blotting

**Image 2.** Western Blot (WB) analysis of specific cells using gp91-phox Polyclonal Antibody.