

Datasheet for ABIN6287361

anti-Angiopietin 1 antibody (N-Term)**3** Images[Go to Product page](#)

Overview

Quantity:	50 µL
Target:	Angiopietin 1 (ANGPT1)
Binding Specificity:	N-Term
Reactivity:	Human, Rat
Host:	Rabbit
Clonality:	Polyclonal
Conjugate:	This Angiopietin 1 antibody is un-conjugated
Application:	Western Blotting (WB), ELISA, Immunohistochemistry (Paraffin-embedded Sections) (IHC (p))

Product Details

Immunogen:	Synthesized peptide derived from the N-terminal region of human Ang-1.
Isotype:	IgG
Specificity:	Ang-1 Polyclonal Antibody detects endogenous levels of Ang-1 protein.
Characteristics:	Rabbit Polyclonal to Ang-1.
Purification:	The antibody was affinity-purified from rabbit antiserum by affinity-chromatography using epitope-specific immunogen.

Target Details

Target:	Angiopietin 1 (ANGPT1)
Alternative Name:	Ang-1 (ANGPT1 Products)

Target Details

Molecular Weight:	35 57 kDa
Gene ID:	284
UniProt:	Q15389
Pathways:	RTK Signaling , Glycosaminoglycan Metabolic Process

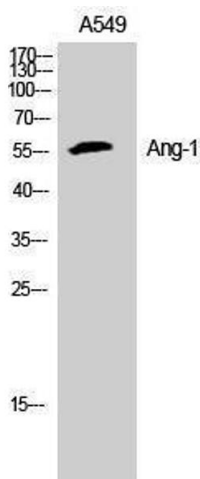
Application Details

Application Notes:	WB 1:500-1:2000, IHC-P 1:100-1:300, ELISA 1:20000,
Restrictions:	For Research Use only

Handling

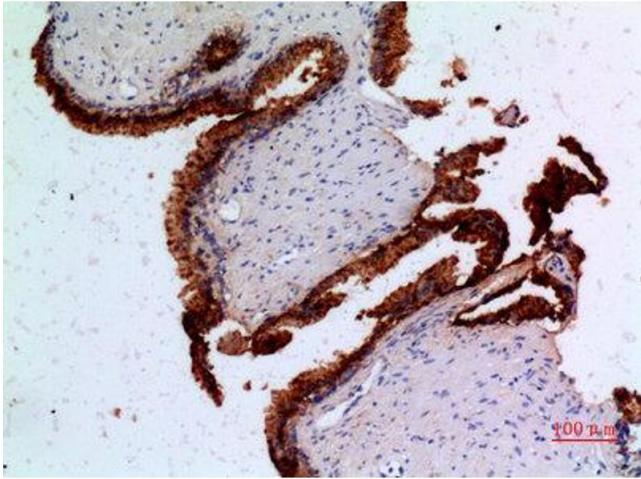
Format:	Liquid
Concentration:	1 mg/mL
Buffer:	Liquid in PBS containing 50 % glycerol, 0.5 % BSA and 0.02 % sodium azide.
Preservative:	Sodium azide
Precaution of Use:	This product contains Sodium azide: a POISONOUS AND HAZARDOUS SUBSTANCE which should be handled by trained staff only.
Handling Advice:	Avoid repeated freeze/thaw cycles.
Storage:	-20 °C
Storage Comment:	Store at -20°C.

Images



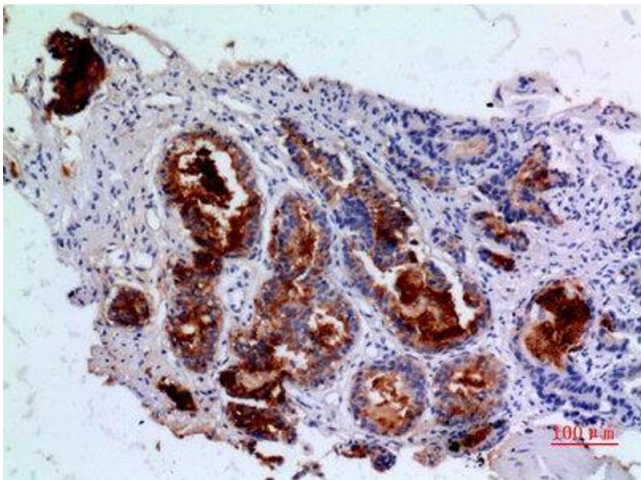
Western Blotting

Image 1.



Immunohistochemistry

Image 2. Immunohistochemistry (IHC) analysis of paraffin-embedded Human Prostatic Cancer, antibody was diluted at 1:100.



Immunohistochemistry

Image 3. Immunohistochemistry (IHC) analysis of paraffin-embedded Human Prostatic Cancer, antibody was diluted at 1:100.