

Datasheet for ABIN6288570
anti-STAT5B antibody



[Go to Product page](#)

2 Images

Overview

Quantity:	50 µL
Target:	STAT5B
Reactivity:	Human, Mouse, Rat
Host:	Rabbit
Clonality:	Polyclonal
Conjugate:	This STAT5B antibody is un-conjugated
Application:	Western Blotting (WB), Immunohistochemistry (IHC)

Product Details

Immunogen:	Recombinant Protein
Isotype:	IgG
Specificity:	The antibody detects STAT5b
Characteristics:	Rabbit Polyclonal to STAT5b.
Purification:	The antibody was affinity-purified from rabbit antiserum by affinity-chromatography using epitope-specific immunogen.

Target Details

Target:	STAT5B
Alternative Name:	STAT5b (STAT5B Products)
Gene ID:	6777

Target Details

UniProt:	P51692
Pathways:	JAK-STAT Signaling , RTK Signaling , Response to Growth Hormone Stimulus , C21-Steroid Hormone Metabolic Process , Regulation of Leukocyte Mediated Immunity , Positive Regulation of Immune Effector Process , CXCR4-mediated Signaling Events , Activated T Cell Proliferation

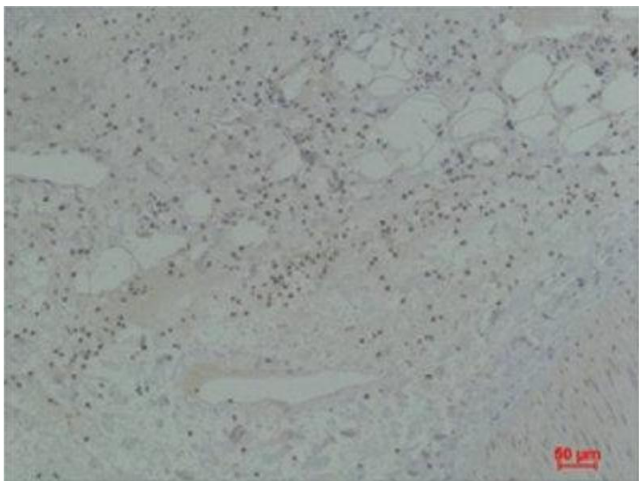
Application Details

Application Notes:	WB 1:500-1:2000, IHC 1:50-1:200
Restrictions:	For Research Use only

Handling

Format:	Liquid
Concentration:	1 mg/mL
Buffer:	Liquid in PBS containing 50 % glycerol, 0.5 % BSA and 0.02 % sodium azide.
Preservative:	Sodium azide
Precaution of Use:	This product contains Sodium azide: a POISONOUS AND HAZARDOUS SUBSTANCE which should be handled by trained staff only.
Handling Advice:	Avoid repeated freeze/thaw cycles.
Storage:	-20 °C
Storage Comment:	Store at -20°C.

Images



Immunohistochemistry

Image 1. Immunohistochemistry (IHC) analysis of paraffin-embedded Human Spleen Tissue using STAT5b Rabbit Polyclonal Antibody diluted at 1:200.

Western Blotting

Image 2. Western Blot (WB) analysis of 1) K562, 2) HeLa, 3) 3T3, 4) Mouse Heart Tissue, 5) PC12, 6) Rat Heart Tissue with STAT5bRabbit Polyclonal Antibody diluted at 1:2000.

