

Datasheet for ABIN6288659
anti-LYN antibody (Ser780)



[Go to Product page](#)

3 Images

Overview

Quantity:	50 µL
Target:	LYN
Binding Specificity:	Ser780
Reactivity:	Human, Mouse, Rat
Host:	Rabbit
Clonality:	Polyclonal
Conjugate:	This LYN antibody is un-conjugated
Application:	Western Blotting (WB), ELISA, Immunohistochemistry (Paraffin-embedded Sections) (IHC (p))

Product Details

Immunogen:	Synthesized peptide derived from human Lyn around the non-phosphorylation site of Y192.
Isotype:	IgG
Specificity:	Lyn Polyclonal Antibody detects endogenous levels of Lyn protein.
Characteristics:	Rabbit Polyclonal to Lyn.
Purification:	The antibody was affinity-purified from rabbit antiserum by affinity-chromatography using epitope-specific immunogen.

Target Details

Target:	LYN
Alternative Name:	Lyn (LYN Products)

Target Details

Molecular Weight: 106 kDa

Gene ID: 4067

UniProt: [P07948](#)

Pathways: [Fc-epsilon Receptor Signaling Pathway](#), [Hormone Transport](#), [Response to Growth Hormone Stimulus](#), [Cellular Response to Molecule of Bacterial Origin](#), [Regulation of Leukocyte Mediated Immunity](#), [Positive Regulation of Immune Effector Process](#), [CXCR4-mediated Signaling Events](#), [Thromboxane A2 Receptor Signaling](#), [Integrin Complex](#), [BCR Signaling](#)

Application Details

Application Notes: WB 1:500-1:2000, IHC-P 1:100-1:300, ELISA 1:20000,

Restrictions: For Research Use only

Handling

Format: Liquid

Concentration: 1 mg/mL

Buffer: Liquid in PBS containing 50 % glycerol, 0.5 % BSA and 0.02 % sodium azide.

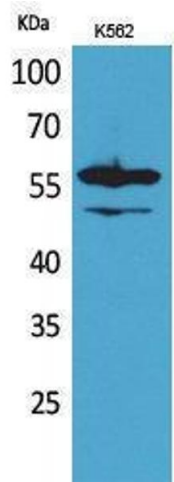
Preservative: Sodium azide

Precaution of Use: This product contains Sodium azide: a POISONOUS AND HAZARDOUS SUBSTANCE which should be handled by trained staff only.

Handling Advice: Avoid repeated freeze/thaw cycles.

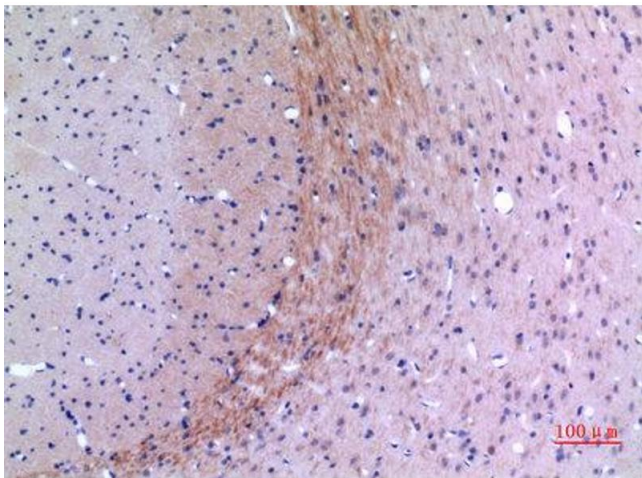
Storage: -20 °C

Storage Comment: Store at -20°C.



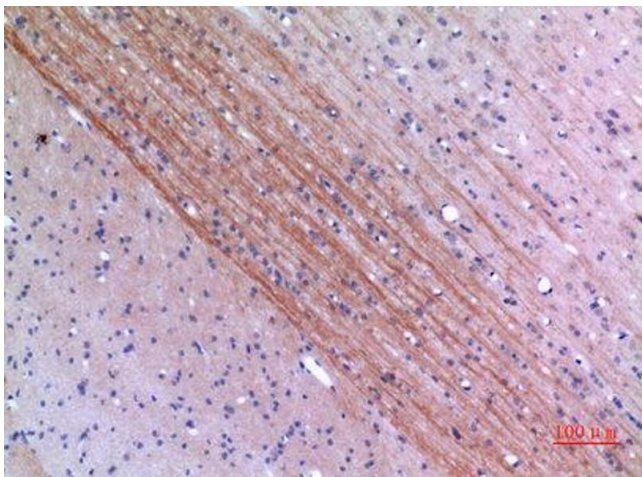
Western Blotting

Image 1.



Immunohistochemistry

Image 2. Immunohistochemistry (IHC) analysis of paraffin-embedded Rat Brain, antibody was diluted at 1:100.



Immunohistochemistry

Image 3. Immunohistochemistry (IHC) analysis of paraffin-embedded Rat Brain, antibody was diluted at 1:100.