

Datasheet for ABIN6288878
anti-NMBR antibody

2 Images



[Go to Product page](#)

Overview

| | |
|--------------|---|
| Quantity: | 50 µL |
| Target: | NMBR |
| Reactivity: | Human, Mouse, Rat |
| Host: | Rabbit |
| Clonality: | Polyclonal |
| Conjugate: | This NMBR antibody is un-conjugated |
| Application: | Western Blotting (WB), Immunohistochemistry (IHC) |

Product Details

| | |
|------------------|---|
| Immunogen: | Synthetic Peptide |
| Isotype: | IgG |
| Specificity: | The antibody detects endogenous NMBR protein. |
| Characteristics: | Rabbit Polyclonal to NMBR. |
| Purification: | The antibody was affinity-purified from rabbit antiserum by affinity-chromatography using epitope-specific immunogen. |

Target Details

| | |
|-------------------|--|
| Target: | NMBR |
| Alternative Name: | NMBR (NMBR Products) |
| Gene ID: | 4829 |

Target Details

UniProt: [P28336](#)

Application Details

Application Notes: WB 1:1000-2000, IHC 1:200-500

Restrictions: For Research Use only

Handling

Format: Liquid

Concentration: 1 mg/mL

Buffer: Liquid in PBS containing 50 % glycerol, 0.5 % BSA and 0.02 % sodium azide.

Preservative: Sodium azide

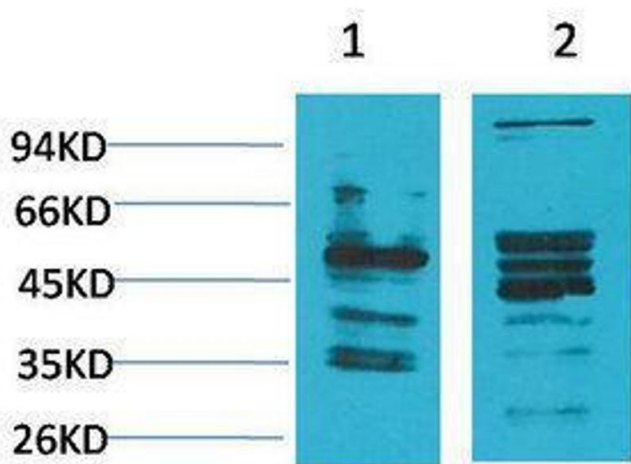
Precaution of Use: This product contains Sodium azide: a POISONOUS AND HAZARDOUS SUBSTANCE which should be handled by trained staff only.

Handling Advice: Avoid repeated freeze/thaw cycles.

Storage: -20 °C

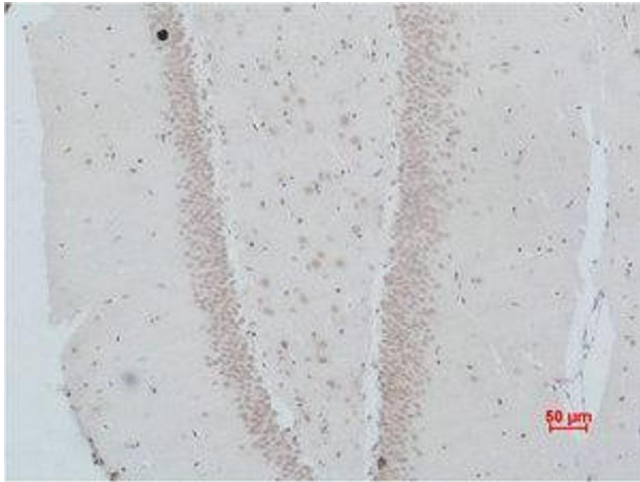
Storage Comment: Store at -20°C.

Images



Western Blotting

Image 1.



Immunohistochemistry

Image 2. Immunohistochemistry (IHC) analysis of paraffin-embedded Rat Brain Tissue using NMBR Polyclonal Antibody.