

Datasheet for ABIN6290181  
**anti-RTDR1 antibody**



[Go to Product page](#)

1 Image

## Overview

|              |                                      |
|--------------|--------------------------------------|
| Quantity:    | 2 x 100 µL                           |
| Target:      | RTDR1                                |
| Reactivity:  | Human, Mouse, Rat                    |
| Host:        | Rabbit                               |
| Clonality:   | Polyclonal                           |
| Conjugate:   | This RTDR1 antibody is un-conjugated |
| Application: | Western Blotting (WB)                |

## Product Details

|               |                                     |
|---------------|-------------------------------------|
| Immunogen:    | Recombinant protein of human RSPH14 |
| Isotype:      | IgG                                 |
| Purification: | Affinity purification               |

## Target Details

|                   |  |
|-------------------|--|
| Target:           | RTDR1  |
| Alternative Name: | RSPH14 ( <a href="#">RTDR1 Products</a> )  |
| Background:       | This gene encodes a protein with no known function but with slight similarity to a yeast vacuolar protein. The gene is located in a region deleted in pediatric rhabdoid tumors of the brain, kidney and soft tissues, but mutations in this gene have not been associated with the disease. |
| Molecular Weight: | 38.592 kDa   |

Target Details

|          |                        |
|----------|------------------------|
| Gene ID: | 27156                  |
| UniProt: | <a href="#">Q9UHP6</a> |

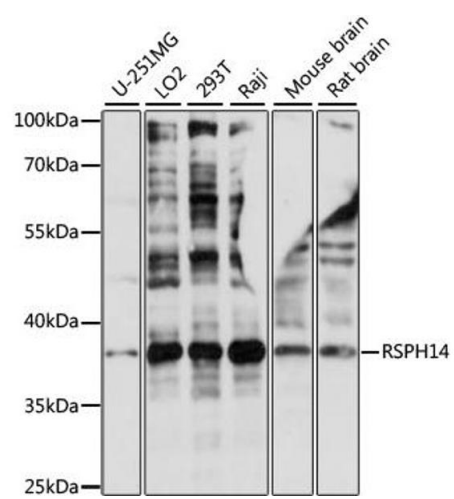
Application Details

|                    |  |
|--------------------|--|
| Application Notes: | WB 1:200 - 1:2000  |
| Comment:           | Expressed in adult cerebellum, spinal cord, spleen, skeletal muscle and some/5 out of 9 rhabdoid tumors, Detected in fetal brain, lung, liver and kidney |
| Restrictions:      | For Research Use only  |

Handling

|                    |  |
|--------------------|--|
| Buffer:            | PBS with 0.02 % sodium azide, 50 % glycerol, pH 7.3.   |
| Preservative:      | Sodium azide   |
| Precaution of Use: | This product contains Sodium azide: a POISONOUS AND HAZARDOUS SUBSTANCE which should be handled by trained staff only. |
| Storage:           | -20 °C   |
| Storage Comment:   | Store at -20C. Avoid freeze / thaw cycles.   |

Images



**Western Blotting**

**Image 1.** Western blot analysis of extracts of various cell lines, using RSPH14 antibody (ABIN6290181) at 1:1000 dilution. Secondary antibody: HRP Goat Anti-Rabbit IgG (H+L) at 1:10000 dilution. Lysates/proteins: 25ug per lane. Blocking buffer: 3% nonfat dry milk in TBST. Detection: ECL Basic Kit. Exposure time: 5s.