

Datasheet for ABIN6290449

anti-GUCA1B antibody[Go to Product page](#)**1** Image

Overview

Quantity:	50 µL
Target:	GUCA1B
Reactivity:	Mouse, Rat
Host:	Rabbit
Clonality:	Polyclonal
Conjugate:	This GUCA1B antibody is un-conjugated
Application:	Western Blotting (WB)

Product Details

Immunogen:	Recombinant protein of human GUCA1B
Isotype:	IgG
Purification:	Affinity purification

Target Details

Target:	GUCA1B
Alternative Name:	GUCA1B (GUCA1B Products)
Background:	The protein encoded by this gene is a calcium-binding protein that activates photoreceptor guanylate cyclases. This gene may have arisen due to a gene duplication event since there is a highly similar gene clustered with it on chromosome 6. Mutations in this gene can cause a form of retinitis pigmentosa.
Molecular Weight:	23.42 kDa

Target Details

Gene ID:	2979
UniProt:	Q9UMX6
Pathways:	Regulation of G-Protein Coupled Receptor Protein Signaling , Phototransduction

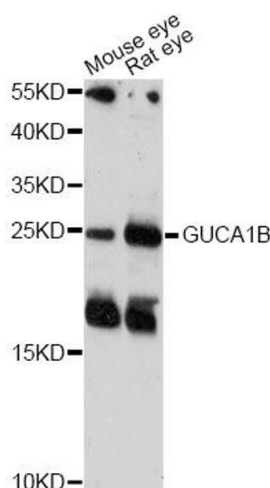
Application Details

Application Notes:	WB 1:500 - 1:2000
Comment:	Retina, Cones and rod
Restrictions:	For Research Use only

Handling

Buffer:	PBS with 0.02 % sodium azide, 50 % glycerol, pH 7.3.
Preservative:	Sodium azide
Precaution of Use:	This product contains Sodium azide: a POISONOUS AND HAZARDOUS SUBSTANCE which should be handled by trained staff only.
Storage:	-20 °C
Storage Comment:	Store at -20C. Avoid freeze / thaw cycles.

Images



Western Blotting

Image 1. Western blot analysis of extracts of various cell lines, using GUCA1B antibody (ABIN6290449) at 1:1000 dilution. Secondary antibody: HRP Goat Anti-Rabbit IgG (H+L) at 1:10000 dilution. Lysates/proteins: 25ug per lane. Blocking buffer: 3% nonfat dry milk in TBST. Detection: ECL Enhanced Kit. Exposure time: 3min.