

Datasheet for ABIN6290952

anti-SEMG2 antibody[Go to Product page](#)**1** Image

Overview

Quantity:	50 µL
Target:	SEMG2
Reactivity:	Human, Mouse
Host:	Rabbit
Clonality:	Polyclonal
Application:	Western Blotting (WB)

Product Details

Immunogen:	Recombinant protein of human SEMG2
Isotype:	IgG
Purification:	Affinity purification

Target Details

Target:	SEMG2
Alternative Name:	SEMG2 (SEMG2 Products)
Background:	<p>The secreted protein encoded by this gene is involved in the formation of a gel matrix that encases ejaculated spermatozoa. Proteolysis by the prostate-specific antigen (PSA) breaks down the gel matrix and allows the spermatozoa to move more freely. The encoded protein is found in lesser abundance than a similar semenogelin protein. An antibacterial activity has been found for a antimicrobial peptide isolated from this protein. The genes encoding these two semenogelin proteins are found in a cluster on chromosome 20.</p>

Target Details

Molecular Weight: 65.444 kDa

Gene ID: 6407

UniProt: [Q02383](#)

Application Details

Application Notes: WB 1:500 - 1:2000

Comment: Seminal vesicles, and to a much lesser extent, epididymis

Restrictions: For Research Use only

Handling

Buffer: PBS with 0.02 % sodium azide, 50 % glycerol, pH 7.3.

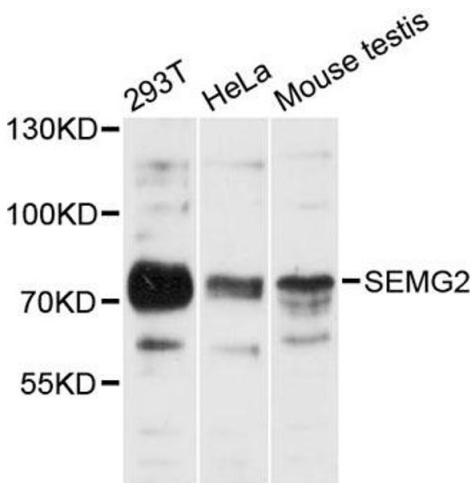
Preservative: Sodium azide

Precaution of Use: This product contains Sodium azide: a POISONOUS AND HAZARDOUS SUBSTANCE which should be handled by trained staff only.

Storage: -20 °C

Storage Comment: Store at -20C. Avoid freeze / thaw cycles.

Images



Western Blotting

Image 1. Western blot analysis of extracts of various cell lines, using SEMG2 antibody (ABIN6290952) at 1:3000 dilution. Secondary antibody: HRP Goat Anti-Rabbit IgG (H+L) at 1:10000 dilution. Lysates/proteins: 25ug per lane. Blocking buffer: 3% nonfat dry milk in TBST. Detection: ECL Basic Kit. Exposure time: 30s.