

Datasheet for ABIN6290962

anti-SLC6A18 antibody[Go to Product page](#)**1** Image

Overview

Quantity:	50 µL
Target:	SLC6A18
Reactivity:	Human, Mouse, Rat
Host:	Rabbit
Clonality:	Polyclonal
Conjugate:	This SLC6A18 antibody is un-conjugated
Application:	Western Blotting (WB)

Product Details

Immunogen:	Recombinant protein of human SLC6A18
Isotype:	IgG
Purification:	Affinity purification

Target Details

Target:	SLC6A18
Alternative Name:	SLC6A18 (SLC6A18 Products)
Molecular Weight:	70.897 kDa
Gene ID:	348932
UniProt:	Q96N87

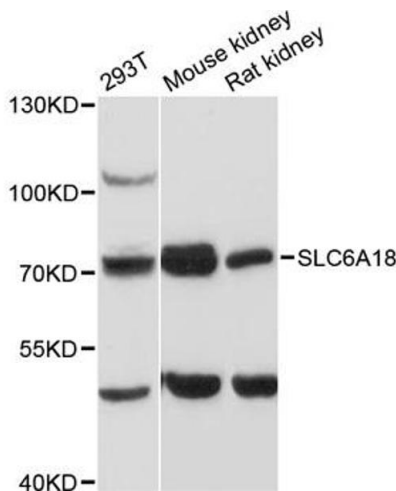
Application Details

Application Notes:	WB 1:500 - 1:2000
Comment:	Abundantly expressed in kidney, but not in intestine
Restrictions:	For Research Use only

Handling

Buffer:	PBS with 0.02 % sodium azide, 50 % glycerol, pH 7.3.
Preservative:	Sodium azide
Precaution of Use:	This product contains Sodium azide: a POISONOUS AND HAZARDOUS SUBSTANCE which should be handled by trained staff only.
Storage:	-20 °C
Storage Comment:	Store at -20C. Avoid freeze / thaw cycles.

Images



Western Blotting

Image 1. Western blot analysis of extracts of various cell lines, using SLC6A18 antibody (ABIN6290962) at 1:3000 dilution. Secondary antibody: HRP Goat Anti-Rabbit IgG (H+L) at 1:10000 dilution. Lysates/proteins: 25ug per lane. Blocking buffer: 3% nonfat dry milk in TBST. Detection: ECL Basic Kit. Exposure time: 30s.