



[Go to Product page](#)

Datasheet for ABIN6290966

anti-Spectrin beta Chain, Erythrocyte (SPTB) antibody

1 Image

Overview

Quantity:	50 µL
Target:	Spectrin beta Chain, Erythrocyte (SPTB)
Reactivity:	Human, Mouse
Host:	Rabbit
Clonality:	Polyclonal
Application:	Western Blotting (WB)

Product Details

Immunogen:	Recombinant Protein of human SPTB
Isotype:	IgG
Purification:	Affinity purification

Target Details

Target:	Spectrin beta Chain, Erythrocyte (SPTB)
Alternative Name:	SPTB (SPTB Products)
Background:	This locus encodes a member of the spectrin gene family. Spectrin proteins, along with ankyrin, play a role in cell membrane organization and stability. The protein encoded by this locus functions in stability of erythrocyte membranes, and mutations in this gene have been associated with spherocytosis type 2, hereditary elliptocytosis, and neonatal hemolytic anemia. Alternatively spliced transcript variants have been described.
Molecular Weight:	246.468 kDa

Target Details

Gene ID:	6710
UniProt:	P11277
Pathways:	Regulation of Actin Filament Polymerization

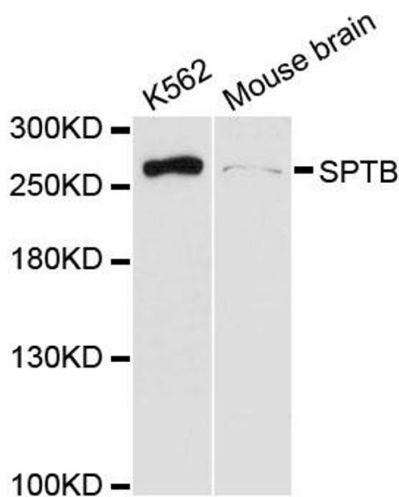
Application Details

Application Notes:	WB 1:500 - 1:2000
Restrictions:	For Research Use only

Handling

Buffer:	PBS with 0.02 % sodium azide, 50 % glycerol, pH 7.3.
Preservative:	Sodium azide
Precaution of Use:	This product contains Sodium azide: a POISONOUS AND HAZARDOUS SUBSTANCE which should be handled by trained staff only.
Storage:	-20 °C
Storage Comment:	Store at -20C. Avoid freeze / thaw cycles.

Images



Western Blotting

Image 1. Western blot analysis of extracts of various cell lines, using SPTB antibody (ABIN6290966) at 1:3000 dilution. Secondary antibody: HRP Goat Anti-Rabbit IgG (H+L) at 1:10000 dilution. Lysates/proteins: 25ug per lane. Blocking buffer: 3% nonfat dry milk in TBST. Detection: ECL Enhanced Kit. Exposure time: 90s.