

Datasheet for ABIN6291191
anti-PCDHB16 antibody[Go to Product page](#)

1 Image

Overview

Quantity:	50 µL
Target:	PCDHB16
Reactivity:	Rat, Mouse
Host:	Rabbit
Clonality:	Polyclonal
Conjugate:	This PCDHB16 antibody is un-conjugated
Application:	Western Blotting (WB)

Product Details

Immunogen:	Recombinant protein of human PCDHB16
Isotype:	IgG
Purification:	Affinity purification

Target Details

Target:	PCDHB16
Alternative Name:	PCDHB16 (PCDHB16 Products)
Background:	This gene is a member of the protocadherin beta gene cluster, one of three related gene clusters tandemly linked on chromosome five. The gene clusters demonstrate an unusual genomic organization similar to that of B-cell and T-cell receptor gene clusters. The beta cluster contains 16 genes and 3 pseudogenes, each encoding 6 extracellular cadherin domains and a cytoplasmic tail that deviates from others in the cadherin superfamily. The extracellular

Target Details

domains interact in a homophilic manner to specify differential cell-cell connections. Unlike the alpha and gamma clusters, the transcripts from these genes are made up of only one large exon, not sharing common 3' exons as expected. These neural cadherin-like cell adhesion proteins are integral plasma membrane proteins. Their specific functions are unknown but they most likely play a critical role in the establishment and function of specific cell-cell neural connections.

Molecular Weight:	84.983 kDa
-------------------	------------

Gene ID:	57717
----------	-------

UniProt:	Q9NRJ7
----------	------------------------

Application Details

Application Notes:	WB 1:200 - 1:2000
--------------------	-------------------

Restrictions:	For Research Use only
---------------	-----------------------

Handling

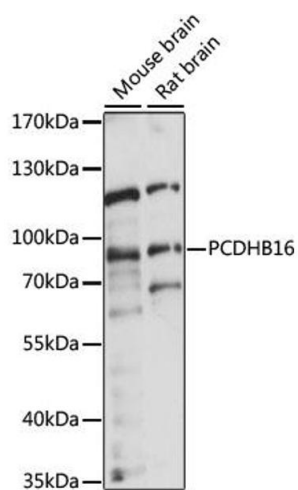
Buffer:	PBS with 0.02 % sodium azide, 50 % glycerol, pH 7.3.
---------	--

Preservative:	Sodium azide
---------------	--------------

Precaution of Use:	This product contains Sodium azide: a POISONOUS AND HAZARDOUS SUBSTANCE which should be handled by trained staff only.
--------------------	--

Storage:	-20 °C
----------	--------

Storage Comment:	Store at -20C. Avoid freeze / thaw cycles.
------------------	--



Western Blotting

Image 1. Western blot analysis of extracts of various cell lines, using PCDHB16 antibody (ABIN6291191) at 1:1000 dilution. Secondary antibody: HRP Goat Anti-Rabbit IgG (H+L) at 1:10000 dilution. Lysates/proteins: 25ug per lane. Blocking buffer: 3% nonfat dry milk in TBST. Detection: ECL Basic Kit. Exposure time: 5s.