

Datasheet for ABIN6292125  
**anti-HS2ST1 antibody**



[Go to Product page](#)

1 Image

## Overview

Quantity:	2 x 100 µL
Target:	HS2ST1
Reactivity:	Human, Mouse, Rat
Host:	Rabbit
Clonality:	Polyclonal
Conjugate:	This HS2ST1 antibody is un-conjugated
Application:	Western Blotting (WB)

## Product Details

Immunogen:	Recombinant protein of human HS2ST1
Isotype:	IgG
Purification:	Affinity purification

## Target Details

Target:	HS2ST1
Alternative Name:	HS2ST1 ( <a href="#">HS2ST1 Products</a> )
Background:	Heparan sulfate biosynthetic enzymes are key components in generating a myriad of distinct heparan sulfate fine structures that carry out multiple biologic activities. This gene encodes a member of the heparan sulfate biosynthetic enzyme family that transfers sulfate to the 2 position of the iduronic acid residue of heparan sulfate. The disruption of this gene resulted in no kidney formation in knockout embryonic mice, indicating that the absence of this enzyme

## Target Details

	may interfere with the signaling required for kidney formation. Two alternatively spliced transcript variants that encode different proteins have been found for this gene.
Molecular Weight:	41.881 kDa
Gene ID:	9653
UniProt:	<a href="#">Q7LGA3</a>
Pathways:	<a href="#">Glycosaminoglycan Metabolic Process</a> , <a href="#">Tube Formation</a> , <a href="#">SARS-CoV-2 Protein Interactome</a>

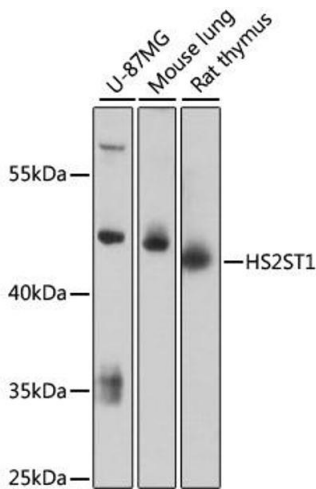
## Application Details

Application Notes:	WB 1:500 - 1:2000
Restrictions:	For Research Use only

## Handling

Buffer:	PBS with 0.02 % sodium azide, 50 % glycerol, pH 7.3.
Preservative:	Sodium azide
Precaution of Use:	This product contains Sodium azide: a POISONOUS AND HAZARDOUS SUBSTANCE which should be handled by trained staff only.
Storage:	-20 °C
Storage Comment:	Store at -20C. Avoid freeze / thaw cycles.

## Images



### Western Blotting

**Image 1.** Western blot analysis of extracts of various cell lines, using HS2ST1 antibody (ABIN6292125) at 1:3000 dilution. Secondary antibody: HRP Goat Anti-Rabbit IgG (H+L) at 1:10000 dilution. Lysates/proteins: 25ug per lane. Blocking buffer: 3% nonfat dry milk in TBST. Detection: ECL Basic Kit. Exposure time: 90s.