

Datasheet for ABIN6292312  
**anti-TGFBRAP1 antibody**[Go to Product page](#)

## 1 Image

## Overview

Quantity:	50 µL
Target:	TGFBRAP1
Reactivity:	Human, Mouse
Host:	Rabbit
Clonality:	Polyclonal
Conjugate:	This TGFBRAP1 antibody is un-conjugated
Application:	Western Blotting (WB)

## Product Details

Immunogen:	Recombinant protein of human TGFBRAP1
Isotype:	IgG
Purification:	Affinity purification

## Target Details

Target:	TGFBRAP1
Alternative Name:	TGFBRAP1 ( <a href="#">TGFBRAP1 Products</a> )
Background:	<p>This gene encodes a protein that binds to transforming growth factor-beta (TGF-beta) receptors and plays a role in TGF-beta signaling. The encoded protein acts as a chaperone in signaling downstream of TGF-beta. It is involved in signal-dependent association with SMAD4. The protein is also a component of mammalian CORVET, a multisubunit tethering protein complex that is involved in fusion of early endosomes.</p>

## Target Details

Molecular Weight: 97.158 kDa

Gene ID: 9392

UniProt: [Q8WUH2](#)

## Application Details

Application Notes: WB 1:500 - 1:2000

Restrictions: For Research Use only

## Handling

Buffer: PBS with 0.02 % sodium azide, 50 % glycerol, pH 7.3.

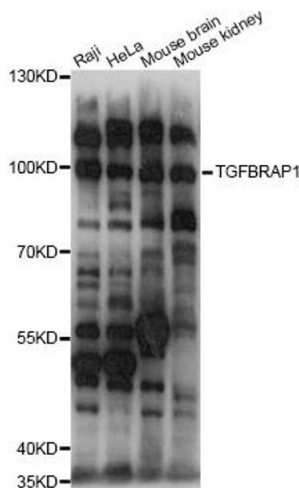
Preservative: Sodium azide

Precaution of Use: This product contains Sodium azide: a POISONOUS AND HAZARDOUS SUBSTANCE which should be handled by trained staff only.

Storage: -20 °C

Storage Comment: Store at -20C. Avoid freeze / thaw cycles.

## Images



### Western Blotting

**Image 1.** Western blot analysis of extracts of various cell lines, using TGFBRAP1 antibody (ABIN6292312) at 1:1000 dilution. Secondary antibody: HRP Goat Anti-Rabbit IgG (H+L) at 1:10000 dilution. Lysates/proteins: 25ug per lane. Blocking buffer: 3% nonfat dry milk in TBST. Detection: ECL Basic Kit. Exposure time: 1s.