

Datasheet for ABIN6292331

**anti-Solute Carrier Family 14 (Urea Transporter, Kidney)  
Member 2 (SLC14A2) antibody**[Go to Product page](#)**1** Image

## Overview

Quantity:	20 µL
Target:	Solute Carrier Family 14 (Urea Transporter, Kidney) Member 2 (SLC14A2)
Reactivity:	Mouse, Human
Host:	Rabbit
Clonality:	Polyclonal
Conjugate:	Un-conjugated
Application:	Western Blotting (WB)

## Product Details

Immunogen:	Recombinant Protein of human SLC14A2
Isotype:	IgG
Purification:	Affinity purification

## Target Details

Target:	Solute Carrier Family 14 (Urea Transporter, Kidney) Member 2 (SLC14A2)
Alternative Name:	SLC14A2 ( <a href="#">SLC14A2 Products</a> )
Background:	<p>The protein encoded by this gene belongs to the urea transporter family. In mammalian cells, urea is the chief end product of nitrogen catabolism, and plays an important role in the urinary concentration mechanism. This protein is expressed in the inner medulla of the kidney, and mediates rapid transepithelial urea transport across the inner medullary collecting duct.</p> <p>Alternatively spliced transcript variants have been found for this gene.</p>

### Target Details

Molecular Weight:	101.209 kDa
Gene ID:	8170
UniProt:	<a href="#">Q15849</a>
Pathways:	<a href="#">Response to Water Deprivation</a>

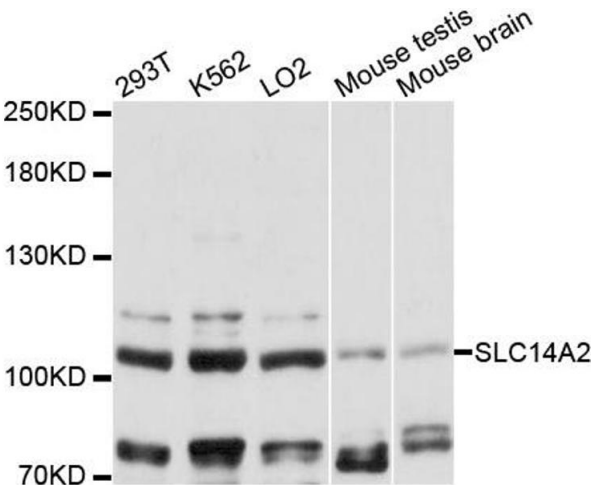
### Application Details

Application Notes:	WB 1:500 - 1:2000
Comment:	Isoform 1 and isoform 2 are expressed in the inner medulla of the kidney
Restrictions:	For Research Use only

### Handling

Buffer:	PBS with 0.02 % sodium azide, 50 % glycerol, pH 7.3.
Preservative:	Sodium azide
Precaution of Use:	This product contains Sodium azide: a POISONOUS AND HAZARDOUS SUBSTANCE which should be handled by trained staff only.
Storage:	-20 °C
Storage Comment:	Store at -20C. Avoid freeze / thaw cycles.

### Images



#### Western Blotting

**Image 1.** Western blot analysis of extracts of various cell lines, using SLC14A2 antibody (ABIN6292331) at 1:3000 dilution. Secondary antibody: HRP Goat Anti-Rabbit IgG (H+L) at 1:10000 dilution. Lysates/proteins: 25ug per lane. Blocking buffer: 3% nonfat dry milk in TBST. Detection: ECL Basic Kit. Exposure time: 60s.