

Datasheet for ABIN6292463

**anti-CRYGB antibody**[Go to Product page](#)**1** Image

## Overview

Quantity:	50 µL
Target:	CRYGB
Reactivity:	Mouse, Rat
Host:	Rabbit
Clonality:	Polyclonal
Conjugate:	This CRYGB antibody is un-conjugated
Application:	Western Blotting (WB)

## Product Details

Immunogen:	Recombinant protein of human CRYGB
Isotype:	IgG
Purification:	Affinity purification

## Target Details

Target:	CRYGB
Alternative Name:	CRYGB ( <a href="#">CRYGB Products</a> )
Background:	Crystallins are separated into two classes: taxon-specific, or enzyme, and ubiquitous. The latter class constitutes the major proteins of vertebrate eye lens and maintains the transparency and refractive index of the lens. Since lens central fiber cells lose their nuclei during development, these crystallins are made and then retained throughout life, making them extremely stable proteins. Mammalian lens crystallins are divided into alpha, beta, and gamma families, beta and

## Target Details

gamma crystallins are also considered as a superfamily. Alpha and beta families are further divided into acidic and basic groups. Seven protein regions exist in crystallins: four homologous motifs, a connecting peptide, and N- and C-terminal extensions. Gamma-crystallins are a homogeneous group of highly symmetrical, monomeric proteins typically lacking connecting peptides and terminal extensions. They are differentially regulated after early development. Four gamma-crystallin genes (gamma-A through gamma-D) and three pseudogenes (gamma-E, gamma-F, gamma-G) are tandemly organized in a genomic segment as a gene cluster. Whether due to aging or mutations in specific genes, gamma-crystallins have been involved in cataract formation.

Molecular Weight:	20.908 kDa
-------------------	------------

Gene ID:	1419
----------	------

UniProt:	<a href="#">P07316</a>
----------	------------------------

## Application Details

Application Notes:	WB 1:500 - 1:2000
--------------------	-------------------

Restrictions:	For Research Use only
---------------	-----------------------

## Handling

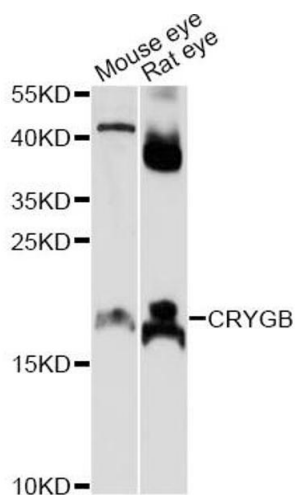
Buffer:	PBS with 0.02 % sodium azide, 50 % glycerol, pH 7.3.
---------	--

Preservative:	Sodium azide
---------------	--------------

Precaution of Use:	This product contains Sodium azide: a POISONOUS AND HAZARDOUS SUBSTANCE which should be handled by trained staff only.
--------------------	--

Storage:	-20 °C
----------	--------

Storage Comment:	Store at -20C. Avoid freeze / thaw cycles.
------------------	--



### Western Blotting

**Image 1.** Western blot analysis of extracts of various cell lines, using CRYGB antibody (ABIN6292463) at 1:1000 dilution. Secondary antibody: HRP Goat Anti-Rabbit IgG (H+L) at 1:10000 dilution. Lysates/proteins: 25ug per lane. Blocking buffer: 3% nonfat dry milk in TBST. Detection: ECL Basic Kit. Exposure time: 10s.