



Datasheet for ABIN6292482

anti-CEP68 antibody



[Go to Product page](#)

1 Image

Overview

Quantity:	50 µL
Target:	CEP68
Reactivity:	Human, Mouse, Rat
Host:	Rabbit
Clonality:	Polyclonal
Conjugate:	This CEP68 antibody is un-conjugated
Application:	Western Blotting (WB)

Product Details

Immunogen:	Recombinant protein of human CEP68
Isotype:	IgG
Purification:	Affinity purification

Target Details

Target:	CEP68
Alternative Name:	CEP68 (CEP68 Products)
Molecular Weight:	81.102 kDa
Gene ID:	23177
UniProt:	Q76N32
Pathways:	SARS-CoV-2 Protein Interactome

Application Details

Application Notes: WB 1:500 - 1:2000

Restrictions: For Research Use only

Handling

Buffer: PBS with 0.02 % sodium azide, 50 % glycerol, pH 7.3.

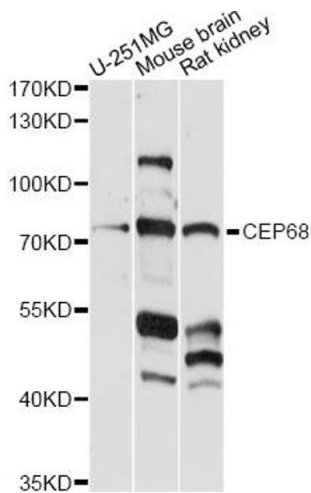
Preservative: Sodium azide

Precaution of Use: This product contains Sodium azide: a POISONOUS AND HAZARDOUS SUBSTANCE which should be handled by trained staff only.

Storage: -20 °C

Storage Comment: Store at -20C. Avoid freeze / thaw cycles.

Images



Western Blotting

Image 1. Western blot analysis of extracts of various cell lines, using CEP68 antibody (ABIN6292482) at 1:1000 dilution. Secondary antibody: HRP Goat Anti-Rabbit IgG (H+L) at 1:10000 dilution. Lysates/proteins: 25ug per lane. Blocking buffer: 3% nonfat dry milk in TBST. Detection: ECL Enhanced Kit. Exposure time: 90s.