

Datasheet for ABIN6292521

**anti-SPATA7 antibody**[Go to Product page](#)**1** Image

## Overview

Quantity:	50 µL
Target:	SPATA7
Reactivity:	Human, Mouse, Rat
Host:	Rabbit
Clonality:	Polyclonal
Conjugate:	This SPATA7 antibody is un-conjugated
Application:	Western Blotting (WB)

## Product Details

Immunogen:	Recombinant protein of human SPATA7
Isotype:	IgG
Purification:	Affinity purification

## Target Details

Target:	SPATA7
Alternative Name:	SPATA7 ( <a href="#">SPATA7 Products</a> )
Background:	This gene, originally isolated from testis, is also expressed in retina. Mutations in this gene are associated with Leber congenital amaurosis and juvenile retinitis pigmentosa. Alternatively spliced transcript variants encoding different isoforms have been found for this gene.
Molecular Weight:	67.719 kDa

## Target Details

Gene ID: 55812

UniProt: [Q9P0W8](#)

## Application Details

Application Notes: WB 1:500 - 1:2000

Restrictions: For Research Use only

## Handling

Buffer: PBS with 0.02 % sodium azide, 50 % glycerol, pH 7.3.

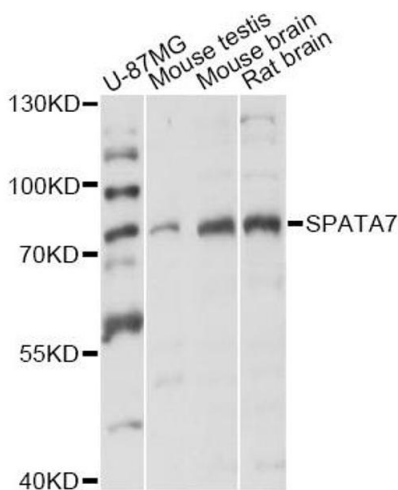
Preservative: Sodium azide

Precaution of Use: This product contains Sodium azide: a POISONOUS AND HAZARDOUS SUBSTANCE which should be handled by trained staff only.

Storage: -20 °C

Storage Comment: Store at -20C. Avoid freeze / thaw cycles.

## Images



### Western Blotting

**Image 1.** Western blot analysis of extracts of various cell lines, using SPATA7 antibody (ABIN6292521) at 1:3000 dilution. Secondary antibody: HRP Goat Anti-Rabbit IgG (H+L) at 1:10000 dilution. Lysates/proteins: 25ug per lane. Blocking buffer: 3% nonfat dry milk in TBST. Detection: ECL Basic Kit. Exposure time: 10s.