

Datasheet for ABIN6292591

anti-Adam23 antibody[Go to Product page](#)**1** Image

Overview

Quantity:	50 µL
Target:	Adam23
Reactivity:	Human, Mouse, Rat
Host:	Rabbit
Clonality:	Polyclonal
Conjugate:	This Adam23 antibody is un-conjugated
Application:	Western Blotting (WB)

Product Details

Immunogen:	Recombinant protein of human ADAM23
Isotype:	IgG
Purification:	Affinity purification

Target Details

Target:	Adam23
Alternative Name:	ADAM23 (Adam23 Products)
Background:	<p>This gene encodes a member of the ADAM (a disintegrin and metalloprotease domain) family. Members of this family are membrane-anchored proteins structurally related to snake venom disintegrins and have been implicated in a variety of biological processes involving cell-cell and cell-matrix interactions, including fertilization, muscle development, and neurogenesis. It is reported that inactivation of this gene is associated with tumorigenesis in human cancers.</p>

Target Details

Molecular Weight:	91.926 kDa
Gene ID:	8745
UniProt:	O75077

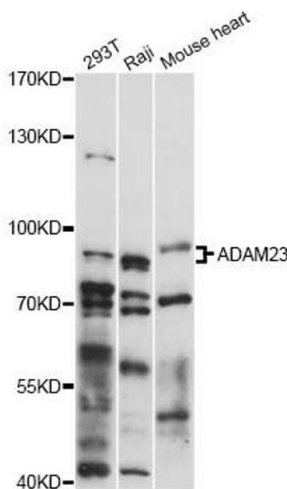
Application Details

Application Notes:	WB 1:500 - 1:2000
Comment:	Highly expressed in the brain and weakly expressed in the heart, In the brain, expressed prominently in the amygdala, caudate nucleus, hypothalamus, thalamus, cerebral cortex and occipital pole
Restrictions:	For Research Use only

Handling

Buffer:	PBS with 0.02 % sodium azide, 50 % glycerol, pH 7.3.
Preservative:	Sodium azide
Precaution of Use:	This product contains Sodium azide: a POISONOUS AND HAZARDOUS SUBSTANCE which should be handled by trained staff only.
Storage:	-20 °C
Storage Comment:	Store at -20C. Avoid freeze / thaw cycles.

Images



Western Blotting

Image 1. Western blot analysis of extracts of various cell lines, using ADAM23 antibody (ABIN6292591) at 1:1000 dilution. Secondary antibody: HRP Goat Anti-Rabbit IgG (H+L) at 1:10000 dilution. Lysates/proteins: 25ug per lane. Blocking buffer: 3% nonfat dry milk in TBST. Detection: ECL Basic Kit. Exposure time: 60s.