

Datasheet for ABIN6292738
anti-MS4A7 antibody



[Go to Product page](#)

1 Image

Overview

| | |
|--------------|--------------------------------------|
| Quantity: | 100 µL |
| Target: | MS4A7 |
| Reactivity: | Mouse |
| Host: | Rabbit |
| Clonality: | Polyclonal |
| Conjugate: | This MS4A7 antibody is un-conjugated |
| Application: | Western Blotting (WB) |

Product Details

| | |
|---------------|------------------------------------|
| Immunogen: | A synthetic peptide of human MS4A7 |
| Isotype: | IgG |
| Purification: | Affinity purification |

Target Details

| | |
|-------------------|---|
| Target: | MS4A7 |
| Alternative Name: | MS4A7 (MS4A7 Products) |
| Background: | This gene encodes a member of the membrane-spanning 4A gene family, members of which are characterized by common structural features and similar intron/exon splice boundaries and display unique expression patterns in hematopoietic cells and nonlymphoid tissues. This family member is associated with mature cellular function in the monocytic lineage, and it may be a component of a receptor complex involved in signal transduction. This gene is localized to |

Target Details

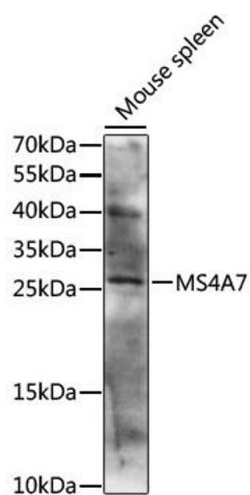
| | |
|-------------------|---|
| | 11q12, in a cluster of other family members. At least four alternatively spliced transcript variants encoding two distinct isoforms have been observed. |
| Molecular Weight: | 26.131 kDa |
| Gene ID: | 58475 |
| UniProt: | Q9GZW8 |

Application Details

| | |
|--------------------|--|
| Application Notes: | WB 1:200 - 1:2000 |
| Comment: | Ubiquitous expression in normal tissues, Expression is more elevated in adult liver, lung, spleen, and heart than in their fetal counterparts, and is higher in normal tissues than in the cancerous tissue or cell lines, Low levels of expression were detected in the promonocytic stage, whereas high levels of expression were detected in mature monocytes |
| Restrictions: | For Research Use only |

Handling

| | |
|--------------------|--|
| Buffer: | PBS with 0.02 % sodium azide, 50 % glycerol, pH 7.3. |
| Preservative: | Sodium azide |
| Precaution of Use: | This product contains Sodium azide: a POISONOUS AND HAZARDOUS SUBSTANCE which should be handled by trained staff only. |
| Storage: | -20 °C |
| Storage Comment: | Store at -20C. Avoid freeze / thaw cycles. |



Western Blotting

Image 1. Western blot analysis of extracts of mouse spleen, using MS4A7 antibody (ABIN6292738) at 1:1000 dilution. Secondary antibody: HRP Goat Anti-Rabbit IgG (H+L) at 1:10000 dilution. Lysates/proteins: 25ug per lane. Blocking buffer: 3% nonfat dry milk in TBST. Detection: ECL Basic Kit. Exposure time: 10s.