

Datasheet for ABIN6292882

**anti-CDY2A antibody**[Go to Product page](#)**1** Image

## Overview

Quantity:	50 µL
Target:	CDY2A
Reactivity:	Human, Mouse, Rat
Host:	Rabbit
Clonality:	Polyclonal
Conjugate:	This CDY2A antibody is un-conjugated
Application:	Western Blotting (WB)

## Product Details

Immunogen:	Recombinant protein of human CDY2B
Isotype:	IgG
Purification:	Affinity purification

## Target Details

Target:	CDY2A
Alternative Name:	CDY2A ( <a href="#">CDY2A Products</a> )
Background:	This intronless gene encodes a protein containing a chromodomain and a histone acetyltransferase catalytic domain. Chromodomain proteins are components of heterochromatin-like complexes and can act as gene repressors. This protein is localized to the nucleus of late spermatids where histone hyperacetylation takes place. Histone hyperacetylation is thought to facilitate the transition in which protamines replace histones as

## Target Details

the major DNA-packaging protein. Two nearly identical copies of this gene are found in a palindromic region on chromosome Y, this record represents the centromeric copy. Chromosome Y also contains a pair of closely related genes in another more telomeric palindrome as well as several related pseudogenes.

Molecular Weight: 60.524 kDa

Gene ID: 203611

UniProt: [Q9Y6F7](#)

## Application Details

Application Notes: WB 1:1000 - 1:3000

Comment: Testis specific

Restrictions: For Research Use only

## Handling

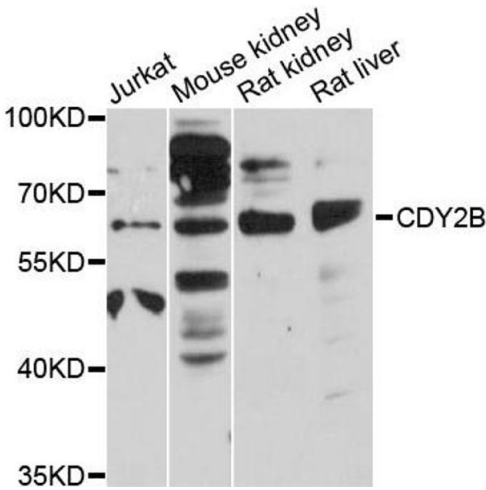
Buffer: PBS with 0.02 % sodium azide, 50 % glycerol, pH 7.3.

Preservative: Sodium azide

Precaution of Use: This product contains Sodium azide: a POISONOUS AND HAZARDOUS SUBSTANCE which should be handled by trained staff only.

Storage: -20 °C

Storage Comment: Store at -20C. Avoid freeze / thaw cycles.



Western Blotting

**Image 1.** Western blot analysis of extracts of various cell lines, using CDY2B antibody (ABIN6292882) at 1:3000 dilution. Secondary antibody: HRP Goat Anti-Rabbit IgG (H+L) at 1:10000 dilution. Lysates/proteins: 25ug per lane. Blocking buffer: 3% nonfat dry milk in TBST. Detection: ECL Basic Kit. Exposure time: 30s.