

Datasheet for ABIN6293118

**anti-Lacritin antibody**[Go to Product page](#)**1** Image

## Overview

Quantity:	50 µL
Target:	Lacritin (LACRT)
Reactivity:	Mouse
Host:	Rabbit
Clonality:	Polyclonal
Conjugate:	This Lacritin antibody is un-conjugated
Application:	Western Blotting (WB)

## Product Details

Immunogen:	A synthetic peptide of human LACRT
Isotype:	IgG
Purification:	Affinity purification

## Target Details

Target:	Lacritin (LACRT)
Alternative Name:	LACRT ( <a href="#">LACRT Products</a> )
Background:	The protein encoded by this gene is highly expressed in the lacrimal glands and localized primarily to secretory granules and secretory fluid. It augments lacrimal acinar cell secretion, promotes ductal cell proliferation, and stimulates signaling through tyrosine phosphorylation and release of calcium.
Molecular Weight:	14.246 kDa

## Target Details

Gene ID: 90070

UniProt: [Q9GZZ8](#)

## Application Details

Application Notes: WB 1:500 - 1:2000

Comment: Expressed in secretory granules of many acinar cells in lacrimal gland and in scattered acinar cells of salivary glands

Restrictions: For Research Use only

## Handling

Buffer: PBS with 0.02 % sodium azide, 50 % glycerol, pH 7.3.

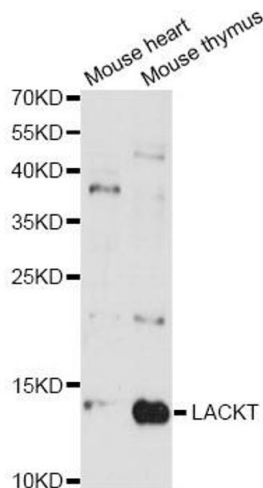
Preservative: Sodium azide

Precaution of Use: This product contains Sodium azide: a POISONOUS AND HAZARDOUS SUBSTANCE which should be handled by trained staff only.

Storage: -20 °C

Storage Comment: Store at -20C. Avoid freeze / thaw cycles.

## Images



### Western Blotting

**Image 1.** Western blot analysis of extracts of various cell lines, using LACRT antibody (ABIN6293118) at 1:3000 dilution. Secondary antibody: HRP Goat Anti-Rabbit IgG (H+L) at 1:10000 dilution. Lysates/proteins: 25ug per lane. Blocking buffer: 3% nonfat dry milk in TBST. Detection: ECL Enhanced Kit. Exposure time: 90s.