

Datasheet for ABIN6293129

**anti-HLA-DOA antibody****1** Image[Go to Product page](#)

## Overview

Quantity:	50 µL
Target:	HLA-DOA
Reactivity:	Mouse
Host:	Rabbit
Clonality:	Polyclonal
Conjugate:	This HLA-DOA antibody is un-conjugated
Application:	Western Blotting (WB)

## Product Details

Immunogen:	Recombinant protein of human HLA-DOA
Isotype:	IgG
Purification:	Affinity purification

## Target Details

Target:	HLA-DOA
Alternative Name:	HLA-DOA ( <a href="#">HLA-DOA Products</a> )
Background:	HLA-DOA belongs to the HLA class II alpha chain paralogues. HLA-DOA forms a heterodimer with HLA-DOB. The heterodimer, HLA-DO, is found in lysosomes in B cells and regulates HLA-DM-mediated peptide loading on MHC class II molecules. In comparison with classical HLA class II molecules, this gene exhibits very little sequence variation, especially at the protein level.

## Target Details

Molecular Weight:	27.599 kDa
Gene ID:	3111
UniProt:	<a href="#">P06340</a>
Pathways:	<a href="#">Human Leukocyte Antigen (HLA) in Adaptive Immune Response</a>

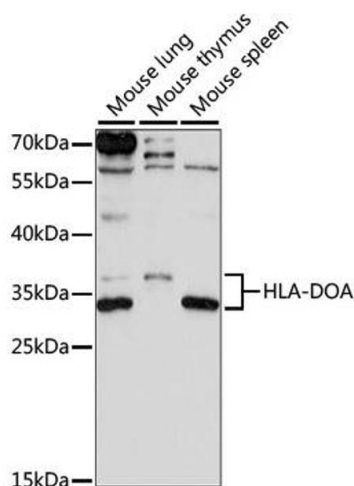
## Application Details

Application Notes:	WB 1:200 - 1:2000
Restrictions:	For Research Use only

## Handling

Buffer:	PBS with 0.02 % sodium azide, 50 % glycerol, pH 7.3.
Preservative:	Sodium azide
Precaution of Use:	This product contains Sodium azide: a POISONOUS AND HAZARDOUS SUBSTANCE which should be handled by trained staff only.
Storage:	-20 °C
Storage Comment:	Store at -20C. Avoid freeze / thaw cycles.

## Images



### Western Blotting

**Image 1.** Western blot analysis of extracts of various cell lines, using HLA-DOA antibody (ABIN6293129) at 1:1000 dilution. Secondary antibody: HRP Goat Anti-Rabbit IgG (H+L) at 1:10000 dilution. Lysates/proteins: 25ug per lane. Blocking buffer: 3% nonfat dry milk in TBST. Detection: ECL Enhanced Kit. Exposure time: 90S.