

Datasheet for ABIN6293160

anti-GLG1 antibody[Go to Product page](#)**1** Image

Overview

Quantity:	20 µL
Target:	GLG1
Reactivity:	Human, Mouse, Rat
Host:	Rabbit
Clonality:	Polyclonal
Conjugate:	This GLG1 antibody is un-conjugated
Application:	Western Blotting (WB)

Product Details

Immunogen:	Recombinant protein of human GLG1
Isotype:	IgG
Purification:	Affinity purification

Target Details

Target:	GLG1
Alternative Name:	GLG1 (GLG1 Products)
Molecular Weight:	134.552 kDa
Gene ID:	2734
UniProt:	Q92896

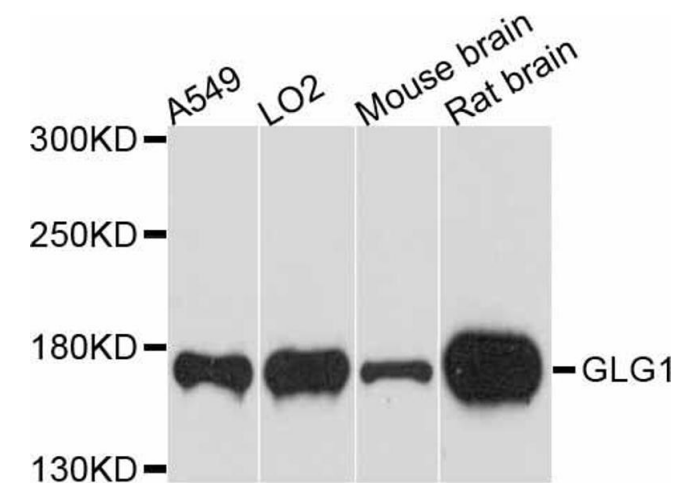
Application Details

Application Notes:	WB 1:500 - 1:1000
Comment:	Widely expressed, Highest levels in pancreas, skeletal muscle, placenta, heart, testis and ovary, Also found in the kidney, liver, lung and brain
Restrictions:	For Research Use only

Handling

Buffer:	PBS with 0.02 % sodium azide, 50 % glycerol, pH 7.3.
Preservative:	Sodium azide
Precaution of Use:	This product contains Sodium azide: a POISONOUS AND HAZARDOUS SUBSTANCE which should be handled by trained staff only.
Storage:	-20 °C
Storage Comment:	Store at -20C. Avoid freeze / thaw cycles.

Images



Western Blotting

Image 1. Western blot analysis of extracts of various cell lines, using GLG1 antibody (ABIN6293160) at 1:3000 dilution. Secondary antibody: HRP Goat Anti-Rabbit IgG (H+L) at 1:10000 dilution. Lysates/proteins: 25ug per lane. Blocking buffer: 3% nonfat dry milk in TBST. Detection: ECL Enhanced Kit. Exposure time: 90s.