

Datasheet for ABIN6293704

anti-Solute Carrier Organic Anion Transporter Family, Member 3A1 (SLC03A1) antibody[Go to Product page](#)**1** Image

Overview

Quantity:	2 x 100 µL
Target:	Solute Carrier Organic Anion Transporter Family, Member 3A1 (SLC03A1)
Reactivity:	Human, Mouse, Rat
Host:	Rabbit
Clonality:	Polyclonal
Conjugate:	Un-conjugated
Application:	Western Blotting (WB)

Product Details

Immunogen:	Recombinant protein of human SLC03A1
Isotype:	IgG
Purification:	Affinity purification

Target Details

Target:	Solute Carrier Organic Anion Transporter Family, Member 3A1 (SLC03A1)
Alternative Name:	SLC03A1 (SLC03A1 Products)
Molecular Weight:	76.553 kDa
Gene ID:	28232
UniProt:	Q9UIG8

Application Details

Application Notes: WB 1:500 - 1:2000

Comment: Ubiquitous, Highly expressed in spleen and leukocytes, Generally the expression of isoform 1 is higher than that of isoform 2, Isoform 2 is particularly abundant in testis and brain, In testis, isoform 1 is detected in spermatogonia at different stages and absent from Sertoli cells, while isoform 2 is present in both (at protein level), Expressed in the choroid plexus epithelium, isoform 1 being localized at the basolateral membrane and isoform 2 at the apical one, as well as in the subapical intracellular vesicular compartments, Differential expression of both isoforms is also observed in other brain region: isoform 1 is very abundant in the gray matter of the frontal cortex, but is not associated with neuronal cell bodies, Not detected in the white matter, In contrast, isoform 2 is associated with neuronal bodies and axons in both the gray and the white matters of the frontal cortex

Restrictions: For Research Use only

Handling

Buffer: PBS with 0.02 % sodium azide, 50 % glycerol, pH 7.3.

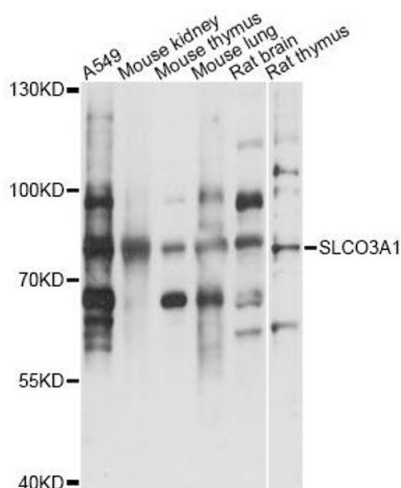
Preservative: Sodium azide

Precaution of Use: This product contains Sodium azide: a POISONOUS AND HAZARDOUS SUBSTANCE which should be handled by trained staff only.

Storage: -20 °C

Storage Comment: Store at -20C. Avoid freeze / thaw cycles.

Images



Western Blotting

Image 1. Western blot analysis of extracts of various cell lines, using SLC03A1 antibody (ABIN6293704) at 1:3000 dilution. Secondary antibody: HRP Goat Anti-Rabbit IgG (H+L) at 1:10000 dilution. Lysates/proteins: 25ug per lane. Blocking buffer: 3% nonfat dry milk in TBST. Detection: ECL Basic Kit. Exposure time: 1s.